

CHAMOT

Recombinant GM-CSF, Human, GMP

CM115-100HPG

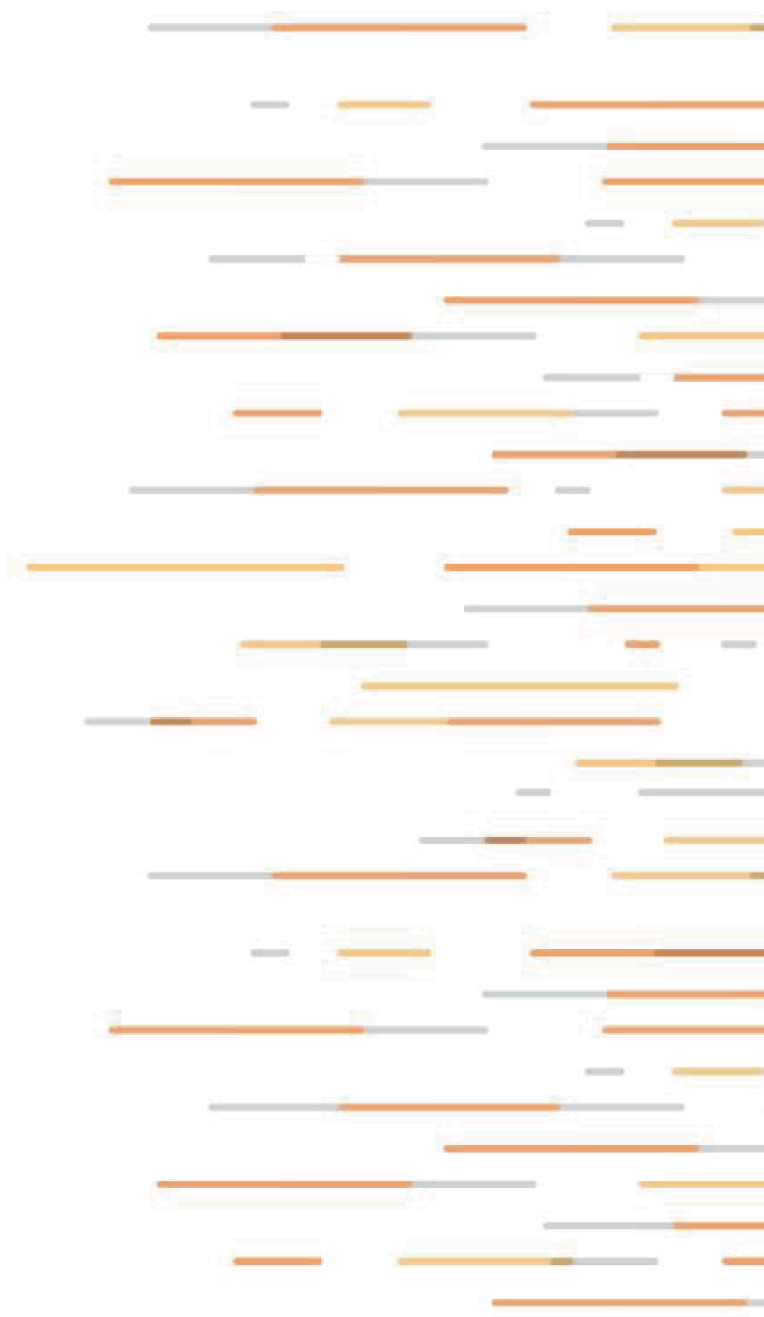
CM115-1000HPG



CHAMOT

乔默®生物

Specialize In Cytokines



CONTENT

1 Product Specifications

2 Product Note

3 Storage/Shipping

4 Scientific Data

Recombinant GM-CSF, Human, GMP

Catalog#	CM115-100HPG	CM115-1000HPG
Size	100 ug	1 mg

Product Specifications

Background Granulocyte-macrophage colony-stimulating factor (GM-CSF) was first identified as a growth factor due to its ability to induce proliferation and differentiation of bone marrow progenitors into granulocytes and macrophages. GM-CSF is produced by multiple cell types including activated T cells, B cells, macrophages, endothelial cells and fibroblasts upon receiving immune stimuli. GM-CSF stimulates stem cells to produce granulocytes and monocytes functions as a cytokine.

Synonyms granulocyte-macrophage colony-stimulating factor, colony stimulating factor 2, CSF2, CSF-2

Uniprot ID P04141

Molecular Weight The protein has a calculated MW of 15.4 kDa. The protein migrates as 15 kDa under reducing condition (SDS-PAGE analysis).

Expression System Escherichia coli

Purity >98% as determined by SDS-PAGE analysis.

Activity Measure by its ability to induce TF-1 cells proliferation. The ED₅₀ for this effect is <80 pg/mL. The specific activity of recombinant human GM-CSF is approximately >1 x 10⁷ IU/mg.

Endotoxin Level <0.05 EU per 1 µg of the protein by the LAL method.

Protein Sequence APARSPSPSTQPWEHVNAIQEARRLLNLSRDTAAEMNETVEVISEMFDLQEPTCLQTRLELY KQGLRGSLTKLKGPLTMMASHYKQHCPPTPETSCATQIITFESFKENLKDFLLVIPFDCWEPV QE with polyhistidine tag at the N-terminus.

Form Lyophilized from a 0.2 µm filtered solution of PBS, pH 8.0.

Application Cell Culture

Product Note

Centrifuge at 3000 rpm for 5 mins before opening. It is recommended to reconstitute the lyophilized protein in sterile H₂O to a concentration not less than 0.5 mg/mL and incubate the stock solution at RT for at least 20 min to ensure sufficient re-dissolved. Do Not Vortex! Vigorous shaking may impair the biological activity of the protein.

Storage/Shipping

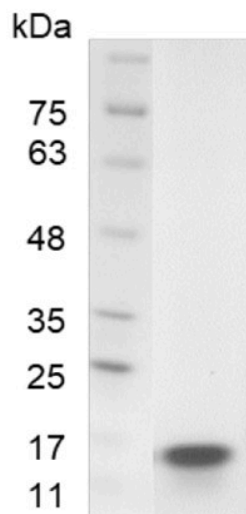
Stability & Storage

Lyophilized protein should be stored at -20°C for 1 year. Upon reconstitution, store at 2°C to 8°C for up to 1 week. Further dilute in a buffer containing a carrier protein or stabilizer (e.g. 0.1% BSA, 10%FBS, 5%HSA or 5% trehalose solution), protein aliquots should be stored at -20°C or -80°C for 3-6 months. Avoid repeated freeze/thaw cycles.

Shipping

Blue Ice

Scientific Data



SDS- PAGE analysis of GMP human GM-CSF

For Research Use or Further Manufacturing Only

Chamot Biotechnology(Shanghai) Co., Ltd. www.chamot-bio.com

Tel: 021-51880030 Mail: info@chamot-bio.com QQ: 864920491