

CHAMOT

重组人骨形态发生蛋白-16 /Recombinant BMP-16, Human, Animal-Free

CM078-5HP

CM078-20HP

CM078-100HP

CM078-500HP

CM078-1000HP



CHAMOT

乔默®生物

Specialize In Cytokines



CONTENT

1 产品简介

2 产品使用

3 产品储存/运输

4 实验数据展示

重组人骨形态发生蛋白-16 /Recombinant BMP-16, Human, Animal-Free

产品编号	CM078-5HP	CM078-20HP	CM078-100HP	CM078-500HP	CM078-1000HP
规格	5 µg	20 µg	100 µg	500 µg	1 mg

产品简介

背景描述 Bone morphogenetic protein 16 (BMP-16) predicts a molecular mass of 18 kDa. BMPs are multi-functional Growth Factors that belong to the transforming Growth Factors beta (TGF-β) superfamily. BMPs initiate signaling from the cell surface by binding to two different receptors (R: Type I and II). The heterodimeric formation of type I R and II R may occur before or after BMP binding, inducing signal transduction pathways through SMADs.

别称 bone morphogenetic protein 16, Nodal, BMP16

蛋白编码 Q96S42

分子量 The protein has a calculated MW of 13.75 kDa. The protein migrates as 18 kDa under reducing condition (SDS-PAGE analysis).

表达系统 Escherichia coli

纯度 >98% as determined by SDS-PAGE.

生物活性 Measure by its ability to induce alkaline phosphatase production by ATDC5 cells. The ED₅₀ for this effect is <2.2 ng/mL.

内毒素检测 <0.1 EU per 1 µg of the protein by the LAL method.

蛋白序列 MHHLPDRSQLCRKVKFQVDFNLIGWGSWIIYPKQYNAYRCEGECNPVGEFHTNTHAYIQS LLKRYQPHRVPSTCCAPVKTKPLSMLYVDNGRVLLDHHKDMIVEECGCL with polyhistidine tag at the C-terminus.

产品形式 The protein was lyophilized from a 0.2 µm filtered solution containing 20 mM sodium citrate, 0.2 M NaCl, pH 4.5. If you have any concerns or special requirements, please confirm with us.

产品应用 Cell Culture

产品使用

1. Before opening, centrifuge at 3000 rpm for 5 mins.

2. Initial Reconstitution

- Reconstitute the Lyophilized Protein in sterile H₂O to a concentration of 100-200 µg/mL.
- Then, incubate it at room temperature for at least 20 mins to ensure sufficient dissolution.

Do Not Vortex! Vigorous shaking may impair the biological activity of the protein.

- Store at 2°C to 8°C for up to 1 week.

3. Extended Storage

- After the initial reconstitution, further dilute the reconstituted protein in a buffer containing a carrier protein or stabilizer (e.g., 0.1% BSA, 10% FBS, 5% HSA, or 5% trehalose solution). The final concentration is not less than 10 µg/ml.

- Prepare aliquots (≥20 µl).
- Store at -20°C or -80°C for 3 to 6 months.

Avoid repeated freeze-thaw cycles.

产品储存/运输

Lyophilized Protein: Store at -20°C for 1 year.

储存

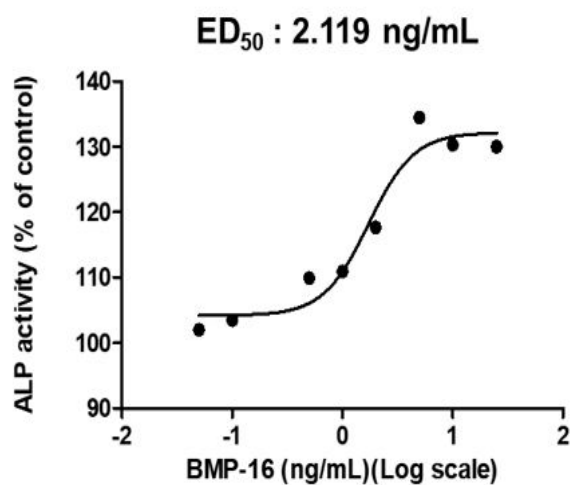
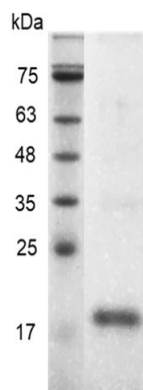
Initial Reconstitution: Store at 2°C to 8°C for up to 1 week.

Extended Storage: Store at -20°C or -80°C for 3 to 6 months with a carrier protein or stabilizer.

运输

Blue Ice

实验数据展示



SDS-PAGE analysis of recombinant human BMP-

16

Human BMP-16, His Tag, E. coli induced alkaline phosphatase

production by ATDC5 cells, with the ED₅₀ at 2.119 ng/mL.

For Research Use or Further Manufacturing Only

Chamot Biotechnology(Shanghai) Co., Ltd. www.chamot-bio.com

Tel: 021-51880030 Mail: info@chamot-bio.com QQ: 864920491