

# CHAMOT

**重组人/小鼠/大鼠骨形态发生蛋白-2 /Recombinant  
BMP-2, Human/Mouse/Rat, Animal-Free**

CM063-5HP

CM063-20HP

CM063-100HP

CM063-500HP

CM063-1000HP



CHAMOT

乔默®生物

*Specialize In Cytokines*

# CONTENT

1 产品简介

2 产品使用

3 产品储存/运输

4 实验数据展示

## 重组人/小鼠/大鼠骨形态发生蛋白-2 /Recombinant BMP-2, Human/Mouse/Rat, Animal-Free

|      |           |            |             |             |              |
|------|-----------|------------|-------------|-------------|--------------|
| 产品编号 | CM063-5HP | CM063-20HP | CM063-100HP | CM063-500HP | CM063-1000HP |
| 规格   | 5 µg      | 20 µg      | 100 µg      | 500 µg      | 1 mg         |

### 产品简介

|       |  |
|-------|--|
| 背景描述  | Bone Morphogenetic Protein-2 (BMP-2) is an extracellular multifunctional signaling cytokine that is also a member of the TGF- $\beta$ family. BMP-2 can bind with the TGF- $\beta$ receptor to active SMAD protein signal transduction. Moreover, it engages in the path of signals such as Wnt and Notch. BMP-2 plays an essential role in the growth of hard bones and cartilage and involved in the differentiation of osteoblasts. |
| 别称    | bone morphogenetic protein 2, Endogenous Mediator (LEM), Mononuclear Cell Factor (MCF), BMP2   |
| 蛋白编码  | P12643   |
| 分子量   | The protein has a calculated MW of 13.76 kDa. The protein migrates as 14 kDa under reducing condition (SDS-PAGE analysis).   |
| 表达系统  | Escherichia coli   |
| 纯度    | >95% as determined by SDS-PAGE.  |
| 生物活性  | Measure by its ability to induce alkaline phosphatase production by ATDC5 cells. The ED <sub>50</sub> for this effect is <1.0 µg/mL.   |
| 内毒素检测 | <0.1 EU per 1 µg of the protein by the LAL method.   |
| 蛋白序列  | MQAKHKQRKRLKSSCKRHPLYVDFSDVGWNDWIVAPPGYHAFYCHGECPFPLADHLNSTN<br>HAIVQTLVNSVNSKIPKACCVPTELSAISMLYLDENEKVVVKNYQDMVVEGCGCR with<br>polyhistidine tag at the C-terminus  |
| 产品形式  | The protein was lyophilized from a 0.2 µm filtered solution containing 20 mM sodium citrate, 0.2 M NaCl, pH 4.5. If you have any concerns or special requirements, please confirm with us.   |
| 产品应用  | Cell Culture   |

## 产品使用

1. Before opening, centrifuge at 3000 rpm for 5 mins.

### 2. Initial Reconstitution

- Reconstitute the Lyophilized Protein in sterile H<sub>2</sub>O to a concentration of 100-200 µg/mL.
- Then, incubate it at room temperature for at least 20 mins to ensure sufficient dissolution.

Do Not Vortex! Vigorous shaking may impair the biological activity of the protein.

- Store at 2°C to 8°C for up to 1 week.

### 3. Extended Storage

- After the initial reconstitution, further dilute the reconstituted protein in a buffer containing a carrier protein or stabilizer (e.g., 0.1% BSA, 10% FBS, 5% HSA, or 5% trehalose solution). The final concentration is not less than 10 µg/ml.

- Prepare aliquots (≥20 µl).
- Store at -20°C or -80°C for 3 to 6 months.

Avoid repeated freeze-thaw cycles.

## 产品储存/运输

**Lyophilized Protein:** Store at -20°C for 1 year.

### 储存

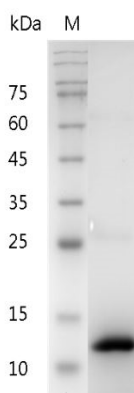
**Initial Reconstitution:** Store at 2°C to 8°C for up to 1 week.

**Extended Storage:** Store at -20°C or -80°C for 3 to 6 months with a carrier protein or stabilizer.

### 运输

Blue Ice

## 实验数据展示



For Research Use or Further Manufacturing Only

Chamot Biotechnology(Shanghai) Co., Ltd. [www.chamot-bio.com](http://www.chamot-bio.com)

Tel: 021-51880030 Mail: [info@chamot-bio.com](mailto:info@chamot-bio.com) QQ: 864920491