

CHAMOT

**重组人纤毛神经营养因子 /Recombinant CNTF,
Human, Animal-Free**

CM137-5HP

CM137-20HP

CM137-100HP

CM137-500HP

CM137-1000HP



CHAMOT

乔默®生物

Specialize In Cytokines

CONTENT

1 产品简介

2 产品使用

3 产品储存/运输

4 实验数据展示

重组人纤毛神经营养因子 /Recombinant CNTF, Human, Animal-Free

产品编号	CM137-5HP	CM137-20HP	CM137-100HP	CM137-500HP	CM137-1000HP
规格	5 µg	20 µg	100 µg	500 µg	1 mg

产品简介

背景描述

Ciliary neurotrophic factor (CNTF) is the member of IL-6 cytokine family and expressed in the nervous system. CNTF is 22.9 kDa neurotrophic factor containing 200 residues, which shows multiple effects in vertebrate retinogenesis. Besides, CNTF acts as a promoter that not only accelerates adult neurogenesis but also increases the survival of neuron after injury. On the other hands, reducing number of hippocampal GABAergic interneurons, as well as 5-HT levels and 5-HT1A receptor expression has been found in CNTF knockout female mice, indicating that CNTF may influence affective behavior in females by regulation of neurotransmission.

别称

ciliary neurotrophic factor, HCNTF

蛋白编码

P26441

分子量

The protein has a calculated MW of 23.74 kDa. The protein migrates as 25 kDa under reducing condition (SDS-PAGE analysis).

表达系统

Escherichia coli

纯度

>98% as determined by SDS-PAGE.

生物活性

Measure by its ability to induce proliferation in TF-1 cells. The ED₅₀ for this effect is <0.15 µg/mL.

内毒素检测

<0.1 EU per 1 µg of the protein by the LAL method.

蛋白序列

MAFTEHSPLTPHRRDLCSRSIWLARKIRSDLTALTESYVKHQGLNKNINLDSADGMPVASTDQ
WSELTEAERLQENLQAYRTFHVLLARLLEDQQVHFTPTGDFHQAIHTLLLQVAAFAYQIEELMI
LLEYKIPRNEADGMPINVGDGGLFEKKLWGLKVLQELSQWTVRSIHDLRFISSHQTGIPARGSH
YIANNKKM with polyhistidine tag at the C-terminus

产品形式

The protein was lyophilized from a 0.2 µm filtered solution containing 1X PBS, pH 7.4. If you have any concerns or special requirements, please confirm with us.

产品应用

Cell Culture

产品使用

1. Before opening, centrifuge at 3000 rpm for 5 mins.

2. Initial Reconstitution

- Reconstitute the Lyophilized Protein in sterile H₂O to a concentration of 100-200 µg/mL.
- Then, incubate it at room temperature for at least 20 mins to ensure sufficient dissolution.

Do Not Vortex! Vigorous shaking may impair the biological activity of the protein.

- Store at 2°C to 8°C for up to 1 week.

3. Extended Storage

- After the initial reconstitution, further dilute the reconstituted protein in a buffer containing a carrier protein or stabilizer (e.g., 0.1% BSA, 10% FBS, 5% HSA, or 5% trehalose solution). The final concentration is not less than 10 µg/mL.

- Prepare aliquots (≥20 µl).
- Store at -20°C or -80°C for 3 to 6 months.

Avoid repeated freeze-thaw cycles.

产品储存/运输

Lyophilized Protein: Store at -20°C for 1 year.

储存

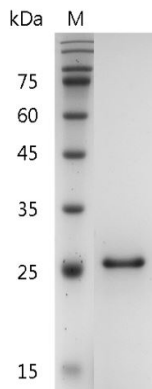
Initial Reconstitution: Store at 2°C to 8°C for up to 1 week.

Extended Storage: Store at -20°C or -80°C for 3 to 6 months with a carrier protein or stabilizer.

运输

Blue Ice

实验数据展示



For Research Use or Further Manufacturing Only

Chamot Biotechnology(Shanghai) Co., Ltd. www.chamot-bio.com

Tel: 021-51880030 Mail: info@chamot-bio.com QQ: 864920491