

CHAMOT

**重组人类烯醇化酶1 /Recombinant ENO1, Human,
Animal-Free**

CM179-5HP

CM179-20HP

CM179-100HP

CM179-500HP

CM179-1000HP



CHAMOT

乔默®生物

Specialize In Cytokines



CONTENT

1 产品简介

2 产品使用

3 产品储存/运输

4 实验数据展示

重组人类烯醇化酶1 /Recombinant ENO1, Human, Animal-Free

| 产品编号 | CM179-5HP | CM179-20HP | CM179-100HP | CM179-500HP | CM179-1000HP |
|------|-----------|------------|-------------|-------------|--------------|
| 规格 | 5 µg | 20 µg | 100 µg | 500 µg | 1 mg |

产品简介

背景描述

Enolase 1 (ENO1) also named alpha-enolase which is a glycolytic enzyme. It could convert the NAD⁺ to NADH by producing two ATP. ENO1 is a homodimer which is composed by two isozymes of enolase (2 α , 2 ν , or 2 β). It also plays an important role in cancer model which can promote tumor cell proliferation and migration by the PI3K signaling pathway. ENO1 is a biomarker of prognostic and diagnostic cancer.

别称

enolase 1, NNE, PPH, MPB1, ENO1L1, HEL-S-17

蛋白编码

P06733

分子量

The protein has a calculated MW of 47.85 kDa. The protein migrates as 55 kDa under reducing condition (SDS-PAGE analysis).

表达系统

Escherichia coli

纯度

>98% as determined by SDS-PAGE.

生物活性

Testing in process

内毒素检测

<0.1 EU per 1 µg of the protein by the LAL method.

蛋白序列

SILKIHAREIFDSRGNPTVEVDLFTSKGLFRAAVPSGASTGIYEALERDNDKTRYMGKGVSKAV
EHINKTIAPALVSKKLNVTQEKEIDKLMIMDGTENKSKFGANAILGVSLAVCKAGAVEKGVPLY
RHIADLAGNSEVILPVPAFNVINGGSHAGNKLAMQEFMILPVGAANFREAMRIGAEVYHNLK
NVIKEYGKDATNVGDEGGFAPNILENKEGLELLKTAIGKAGYTDKVVIGMDVAASEFFRSGKY
DLDFKSPDDPSRYISPDQLADLYKSFIDYPVVSIEDPFDQDDWGAWQKFTASAGIQVVGDDL
TVTNPKRIAKAVNEKSCNCLLLKVNQIGSVTESLQACKLAQANGWGMVSHRSGETEDTFIA
DLVVGLCTGQIKTGAPCRSERLAKYNQLLRIEELGSKAKFAGRNFRNPLAK with
polyhistidine tag at the N-terminus

产品形式

The protein was lyophilized from a 0.2 µm filtered solution containing 7 mM MgSO₄ in 1X PBS, pH 7.2 If you have any concerns or special requirements, please confirm with us.

产品使用

1. Before opening, centrifuge at 3000 rpm for 5 mins.

2. Initial Reconstitution

- Reconstitute the Lyophilized Protein in sterile H₂O to a concentration of 100-200 µg/mL.
- Then, incubate it at room temperature for at least 20 mins to ensure sufficient dissolution.

Do Not Vortex! Vigorous shaking may impair the biological activity of the protein.

- Store at 2°C to 8°C for up to 1 week.

3. Extended Storage

- After the initial reconstitution, further dilute the reconstituted protein in a buffer containing a carrier protein or stabilizer (e.g., 0.1% BSA, 10% FBS, 5% HSA, or 5% trehalose solution). The final concentration is not less than 10 µg/mL.

- Prepare aliquots (≥20 µl).
- Store at -20°C or -80°C for 3 to 6 months.

Avoid repeated freeze-thaw cycles.

产品储存/运输

Lyophilized Protein: Store at -20°C for 1 year.

储存

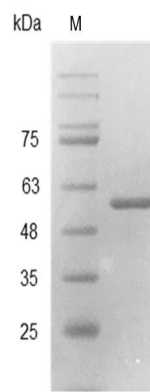
Initial Reconstitution: Store at 2°C to 8°C for up to 1 week.

Extended Storage: Store at -20°C or -80°C for 3 to 6 months with a carrier protein or stabilizer.

运输

Blue Ice

实验数据展示



SDS-PAGE analysis of recombinant human ENO1

For Research Use or Further Manufacturing Only

Chamot Biotechnology(Shanghai) Co., Ltd. www.chamot-bio.com

Tel: 021-51880030 Mail: info@chamot-bio.com QQ: 864920491