

# CHAMOT

**重组人半乳糖凝集素-10 /Recombinant Galectin-10,  
Human, Animal-Free**

CM155-5HP

CM155-20HP

CM155-100HP

CM155-500HP

CM155-1000HP



CHAMOT

乔默®生物

*Specialize In Cytokines*

# CONTENT

1 产品简介

2 产品使用

3 产品储存/运输

4 实验数据展示

## 重组人半乳糖凝集素-10 /Recombinant Galectin-10, Human, Animal-Free

产品编号	CM155-5HP	CM155-20HP	CM155-100HP	CM155-500HP	CM155-1000HP
规格	5 µg	20 µg	100 µg	500 µg	1 mg

### 产品简介

#### 背景描述

Galectin-10 (Gal-10) is a lectin family member and is one of the prototype galectins. It contains one carbohydrate recognition domain (CRD), responsible for  $\beta$ -galactoside binding, and is biologically active as homodimers. It has been reported that galectin-10 is presented in eosinophils but also detected in basophils and macrophages. Accumulated evidence indicates that galectin-10 spontaneously forms Charcot-Leyden crystals (CLCs), participating in allergic responses and related inflammatory reactions. Several binding partners for galectin-10 have been identified, including eosinophil granule cationic ribonucleases, eosinophil-derived neurotoxin (EDN, RNS2), and eosinophil cationic protein (ECP, RNS3), demonstrating the interaction is essential for eosinophil differentiation and granulogenesis.

#### 别称

GAL10, Gal-10, LGALS10, LGALS10A, LPPL\_HUMAN

#### 蛋白编码

Q05315

#### 分子量

The protein has a calculated MW of 16.31 kDa. The protein migrates as 16-19 kDa under reducing condition (SDS-PAGE analysis).

#### 表达系统

Escherichia coli

#### 纯度

>98% as determined by SDS-PAGE.

#### 生物活性

Measure by its ability to chemoattract human THP1 cells using a concentration range of 0.2-25 µg/mL.

#### 内毒素检测

<0.1 EU per 1 µg of the protein by the LAL method.

#### 蛋白序列

SLLPVPYTEAASLSTGSTVTIKGRPLACFLNEPYLQVDFHTEMKEESDIVFHFQVCFGRRVVMN SREYGAWKQQVESKNMPFQDQGFEFELSISVLPDKYQVMVNGQSSYTFDHRIKPEAVKMQV WRDISLTKFNVSYLKR with polyhistidine tag at the N-terminus.

#### 产品形式

The protein was lyophilized from a 0.2 µm filtered solution containing 1X PBS, pH 7.4. If you have any concerns or special requirements, please confirm with us.

## 产品使用

1. Before opening, centrifuge at 3000 rpm for 5 mins.

### 2. Initial Reconstitution

- Reconstitute the Lyophilized Protein in sterile H<sub>2</sub>O to a concentration of 100-200 µg/mL.
- Then, incubate it at room temperature for at least 20 mins to ensure sufficient dissolution.

Do Not Vortex! Vigorous shaking may impair the biological activity of the protein.

- Store at 2°C to 8°C for up to 1 week.

### 3. Extended Storage

- After the initial reconstitution, further dilute the reconstituted protein in a buffer containing a carrier protein or stabilizer (e.g., 0.1% BSA, 10% FBS, 5% HSA, or 5% trehalose solution). The final concentration is not less than 10 µg/mL.

- Prepare aliquots (≥20 µl).
- Store at -20°C or -80°C for 3 to 6 months.

Avoid repeated freeze-thaw cycles.

## 产品储存/运输

**Lyophilized Protein:** Store at -20°C for 1 year.

### 储存

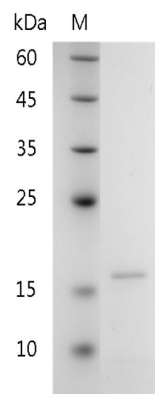
**Initial Reconstitution:** Store at 2°C to 8°C for up to 1 week.

**Extended Storage:** Store at -20°C or -80°C for 3 to 6 months with a carrier protein or stabilizer.

### 运输

Blue Ice

## 实验数据展示



SDS-PAGE analysis of recombinant human Galectin-10

For Research Use or Further Manufacturing Only

Chamot Biotechnology(Shanghai) Co., Ltd. [www.chamot-bio.com](http://www.chamot-bio.com)

Tel: 021-51880030 Mail: [info@chamot-bio.com](mailto:info@chamot-bio.com) QQ: 864920491