

# CHAMOT

**重组人半乳糖凝集素-16 /Recombinant Galectin-16,  
Human, Animal-Free**

**CM159-5HP**

**CM159-20HP**

**CM159-100HP**

**CM159-500HP**

**CM159-1000HP**



**CHAMOT**

乔默®生物

*Specialize In Cytokines*

# CONTENT

1 产品简介

2 产品使用

3 产品储存/运输

4 实验数据展示

## 重组人半乳糖凝集素-16 /Recombinant Galectin-16, Human, Animal-Free

产品编号	CM159-5HP	CM159-20HP	CM159-100HP	CM159-500HP	CM159-1000HP
规格	5 µg	20 µg	100 µg	500 µg	1 mg

### 产品简介

#### 背景描述

Galectin-16 (Gal-16) is a lectin family member and is one of the prototype galectins, but it exists as a monomer, and it is remarkably different from other prototype galectins in  $\beta$ -galactoside binding. Like galectin-13 and galectin-14, Galectin-16 is expressed in the placenta, contributing to T cell apoptosis, immune regulation, and immune tolerance, which is indispensable for fetal development. The molecular mechanism has been demonstrated that galectin-16 forms complex with c-Rel, suggesting galectin-16-activated signal transduction pathways via the c-Rel hub in B or T cells at the maternal-fetal interface.

#### 别称

LGALS16

#### 蛋白编码

A8MUM7

#### 分子量

The protein has a calculated MW of 17.4 kDa. The protein migrates as 18 kDa under reducing condition (SDS-PAGE analysis).

#### 表达系统

Escherichia coli

#### 纯度

>98% as determined by SDS-PAGE.

#### 生物活性

Testing in process

#### 内毒素检测

<0.1 EU per 1 µg of the protein by the LAL method.

#### 蛋白序列

SFLTVPYKLPVSLSVGSCVLIKGTLDSSINPQLQVDFYTEMNEDSEIAFHLRVHLGRRVVMNSR  
EFGIWMLEENLHYVPFEDGKPFDLRIYVCLNEYEVKVNGEYIYAFVHRIPPSYVKMIQVWRDVS  
LDSVLVNNGRR with polyhistidine tag at the N-terminus.

#### 产品形式

The protein was lyophilized from a 0.2 µm filtered solution containing 1X PBS, pH 7.4. If you have any concerns or special requirements, please confirm with us.

#### 产品应用

Cell Culture

## 产品使用

1. Before opening, centrifuge at 3000 rpm for 5 mins.

### 2. Initial Reconstitution

- Reconstitute the Lyophilized Protein in sterile H<sub>2</sub>O to a concentration of 100-200 µg/mL.
- Then, incubate it at room temperature for at least 20 mins to ensure sufficient dissolution.

Do Not Vortex! Vigorous shaking may impair the biological activity of the protein.

- Store at 2°C to 8°C for up to 1 week.

### 3. Extended Storage

- After the initial reconstitution, further dilute the reconstituted protein in a buffer containing a carrier protein or stabilizer (e.g., 0.1% BSA, 10% FBS, 5% HSA, or 5% trehalose solution). The final concentration is not less than 10 µg/ml.

- Prepare aliquots (≥20 µl).
- Store at -20°C or -80°C for 3 to 6 months.

Avoid repeated freeze-thaw cycles.

## 产品储存/运输

**Lyophilized Protein:** Store at -20°C for 1 year.

### 储存

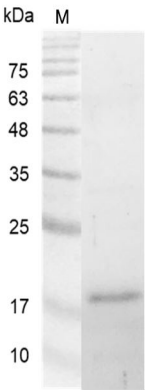
**Initial Reconstitution:** Store at 2°C to 8°C for up to 1 week.

**Extended Storage:** Store at -20°C or -80°C for 3 to 6 months with a carrier protein or stabilizer.

### 运输

Blue Ice

## 实验数据展示



For Research Use or Further Manufacturing Only

Chamot Biotechnology(Shanghai) Co., Ltd. [www.chamot-bio.com](http://www.chamot-bio.com)

Tel: 021-51880030 Mail: [info@chamot-bio.com](mailto:info@chamot-bio.com) QQ: 864920491