

# CHAMOT

**重组人半乳糖凝集素-3 /Recombinant Galectin-3,  
Human, Animal-Free**

CM150-5HP

CM150-20HP

CM150-100HP

CM150-500HP

CM150-1000HP



CHAMOT

乔默®生物

*Specialize In Cytokines*

# CONTENT

1 产品简介

2 产品使用

3 产品储存/运输

4 实验数据展示

## 重组人半乳糖凝集素-3 /Recombinant Galectin-3, Human, Animal-Free

产品编号	CM150-5HP	CM150-20HP	CM150-100HP	CM150-500HP	CM150-1000HP
规格	5 µg	20 µg	100 µg	500 µg	1 mg

### 产品简介

#### 背景描述

Galectin-3 (Gal-3) is one of the lectin family members, which is the only chimera-type galectin, containing one carbohydrate recognition domain (CRD) connected to a long, flexible N-terminal domain. The C-terminal CRD is responsible for  $\beta$ -galactoside binding, and the N-terminal domain is essential for its multimerization, and interaction with other intracellular proteins. Galectin-3 is predominantly presented in the cytoplasm and expressed on the cell surface, and then often secreted into biological fluids, such as serum and urine. Numerous studies have indicated that galectin-3 plays a crucial role in cell proliferation, apoptosis, gene expression, immune surveillance, inflammation, fibrosis, and host defense.

#### 别称

IgE-binding protein, MAC2, L-29, CPB-35

#### 蛋白编码

P17931

#### 分子量

The protein has a calculated MW of 27 kDa. The protein migrates as 32 kDa under reducing condition (SDS-PAGE analysis).

#### 表达系统

Escherichia coli

#### 纯度

>95% as determined by SDS-PAGE.

#### 生物活性

Measured by its ability to chemoattract human THP1 cells using a concentration range of 0.5-1 µg/mL.

#### 内毒素检测

<0.1 EU per 1 µg of the protein by the LAL method.

#### 蛋白序列

ADNFSLHDALSGSGNPNPQGWPAGWGNQPAGAGGYPGASYPGAYPGQAPPGAYPGQAPP  
GAYPGAPGAYPGAPAGVYPGPPSGPGAYPSSGQPSATGAYPATGPYGAPAGPLIVPYNLPLPG  
GVVPRMLITILGTVKPNANRIALDFQRGNDVAFHFNPRFNENNRVIVCNTKLDNNWGREER  
QSVFPFESGKPFKIQVLVEPDHFKVAVNDAHLLQYNHRVKKLNEISKLGISGDIDLTSASYTMI  
with polyhistidine tag at the N-terminus.

#### 产品形式

The protein was lyophilized from a 0.2 µm filtered solution containing 1X PBS, pH 7.4. If you have any concerns or special requirements, please confirm with us.

## 产品使用

1. Before opening, centrifuge at 3000 rpm for 5 mins.

### 2. Initial Reconstitution

- Reconstitute the Lyophilized Protein in sterile H<sub>2</sub>O to a concentration of 100-200 µg/mL.
- Then, incubate it at room temperature for at least 20 mins to ensure sufficient dissolution.

Do Not Vortex! Vigorous shaking may impair the biological activity of the protein.

- Store at 2°C to 8°C for up to 1 week.

### 3. Extended Storage

- After the initial reconstitution, further dilute the reconstituted protein in a buffer containing a carrier protein or stabilizer (e.g., 0.1% BSA, 10% FBS, 5% HSA, or 5% trehalose solution). The final concentration is not less than 10 µg/mL.

- Prepare aliquots (≥20 µl).
- Store at -20°C or -80°C for 3 to 6 months.

Avoid repeated freeze-thaw cycles.

## 产品储存/运输

**Lyophilized Protein:** Store at -20°C for 1 year.

### 储存

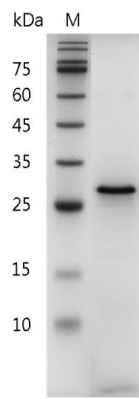
**Initial Reconstitution:** Store at 2°C to 8°C for up to 1 week.

**Extended Storage:** Store at -20°C or -80°C for 3 to 6 months with a carrier protein or stabilizer.

### 运输

Blue Ice

## 实验数据展示



SDS-PAGE analysis of recombinant human Galectin-3

For Research Use or Further Manufacturing Only

Chamot Biotechnology(Shanghai) Co., Ltd. [www.chamot-bio.com](http://www.chamot-bio.com)

Tel: 021-51880030 Mail: [info@chamot-bio.com](mailto:info@chamot-bio.com) QQ: 864920491