

CHAMOT

**重组人半乳糖凝集素-8 /Recombinant Galectin-8,
Human, Animal-Free**

CM153-5HP

CM153-20HP

CM153-100HP

CM153-500HP

CM153-1000HP



CHAMOT

乔默®生物

Specialize In Cytokines



CONTENT

1 产品简介

2 产品使用

3 产品储存/运输

4 实验数据展示

重组人半乳糖凝集素-8 /Recombinant Galectin-8, Human, Animal-Free

产品编号	CM153-5HP	CM153-20HP	CM153-100HP	CM153-500HP	CM153-1000HP
规格	5 µg	20 µg	100 µg	500 µg	1 mg

产品简介

背景描述

Galectin-8 (Gal-8) is a lectin family member and is one of the tandem repeat-type galectins containing two carbohydrate recognition domains (CRD) connected by a linker region in a single peptide chain. The CRD is responsible for β -galactoside binding, and the binding partners for galectin-8 have been identified, including CD44 and a subset of integrins. Galectin-8 and integrins form complexes, subsequently leading to phosphorylation of paxillin and focal adhesion kinase (FAK), which activates signal pathways including MAPK-ERK and PI3K-AKT pathways. Galectin-8 is constitutively presented in the Liver, kidney, cardiac muscle, lung, and brain. Galectin-8 serves as an immunosuppressive protective role against autoimmune CNS inflammation, regulating the balance of Th17 and Th1 polarization.

别称

LGALS8, Gal-8, PCTA-1, PCTA1, Po66-CBP

蛋白编码

O00214

分子量

The protein has a calculated MW of 36.6 kDa. The protein migrates as 34 kDa under reducing condition (SDS-PAGE analysis).

表达系统

Escherichia coli

纯度

>98% as determined by SDS-PAGE.

生物活性

Measure by its ability to chemoattract human THP1 cells. Chemotactic activity was observed at a concentration of 25 µg/mL.

内毒素检测

<0.1 EU per 1 µg of the protein by the LAL method.

蛋白序列

MLSLNNLQNIYNPVIPIFVGITPDQLDPGTLIVIRGHVPSDADRQVLDLQNGSSMKPRADVAF
HFNPRFKRAGCIVCNTLINEKWGREIITYDTPFKREKSFEIVIMVLKDKFQVAVNGKHTLLYGHR
IGPEKIDTLGIYGKVNHSIGFSFSSDLQSTQASSLELTEISRENVPKSGTPQLRLPFAARLNTPMG
PGRTVVVKGEVNANAKSFNVDLLAGKSKDIALHLNPRNLKAFVRNSFLQESWGEEERNITSFP
FSPGMYFEMIIYCDVREFKVAVNGVHSLEYKHRFELSSIDTLEINGDIHLLEVRWSW with
polyhistidine tag at the N-terminus.

产品形式

The protein was lyophilized from a 0.2 µm filtered solution containing 1X PBS, pH 7.4. If you have any concerns or special requirements, please confirm with us.

产品应用

Cell Culture

产品使用

1. Before opening, centrifuge at 3000 rpm for 5 mins.

2. Initial Reconstitution

- Reconstitute the Lyophilized Protein in sterile H₂O to a concentration of 100-200 µg/mL.
- Then, incubate it at room temperature for at least 20 mins to ensure sufficient dissolution.

Do Not Vortex! Vigorous shaking may impair the biological activity of the protein.

- Store at 2°C to 8°C for up to 1 week.

3. Extended Storage

- After the initial reconstitution, further dilute the reconstituted protein in a buffer containing a carrier protein or stabilizer (e.g., 0.1% BSA, 10% FBS, 5% HSA, or 5% trehalose solution). The final concentration is not less than 10 µg/ml.

- Prepare aliquots (≥20 µl).
- Store at -20°C or -80°C for 3 to 6 months.

Avoid repeated freeze-thaw cycles.

产品储存/运输**储存**

Lyophilized Protein: Store at -20°C for 1 year.

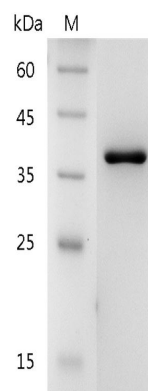
Initial Reconstitution: Store at 2°C to 8°C for up to 1 week.

Extended Storage: Store at -20°C or -80°C for 3 to 6 months with a carrier protein or stabilizer.

运输

Blue Ice

实验数据展示



SDS-PAGE analysis of recombinant human Galectin-8

For Research Use or Further Manufacturing Only

Chamot Biotechnology(Shanghai) Co., Ltd. www.chamot-bio.com

Tel: 021-51880030 Mail: info@chamot-bio.com QQ: 864920491