

CHAMOT

**重组人胃内因子 /Recombinant GIF, Human,
Animal-Free**

CM144-5HP

CM144-20HP

CM144-100HP

CM144-500HP

CM144-1000HP



CHAMOT

乔默®生物

Specialize In Cytokines

CONTENT

1 产品简介

2 产品使用

3 产品储存/运输

4 实验数据展示

重组人胃内因子 /Recombinant GIF, Human, Animal-Free

产品编号	CM144-5HP	CM144-20HP	CM144-100HP	CM144-500HP	CM144-1000HP
规格	5 µg	20 µg	100 µg	500 µg	1 mg

产品简介

背景描述 Human Gastric intrinsic factor (GIF) is an intrinsic factor of the eukaryotic cobalamin family. Gastric intrinsic factor is a 44 kDa protein containing 380 amino acid residues. It is secreted from the parietal cells in gastric mucosa. Gastric intrinsic factor plays a major role in absorption and transportation of cobalamin and Cbl. It could form the complex with Vit.B12 that avoid the destroy of Vit.B12.

别称 gastric intrinsic factor, CBLIF, IF, IFMH, INF, TCN3

蛋白编码 P27352

分子量 The protein has a calculated MW of 46.23 kDa. The protein migrates as 43 kDa under reducing condition (SDS-PAGE analysis).

表达系统 Escherichia coli

纯度 >98% as determined by SDS-PAGE.

生物活性 Testing in process

内毒素检测 <0.1 EU per 1 µg of the protein by the LAL method.

蛋白序列 MAWFALYLLSLLWATAGTSTQTQSSCSVPSAQEPLVNGIQVLMENSVTSSAYPNPSILIAMNLA
GAYNLKAQKLLTYQLMSSDNNDLTIGQLGLTIMALTSSCRDPGDKVSILQRQMENWAPSSPN
AEASAFYGPSLAILALCQKNSEATLPIAVRFAKTLLANSSPFNVDTGAMATLALTCMYNKIPVGS
EEGYRSLFGQVLKDIVEKISMKIKDNGIIGDIYSTGLAMQALSVTPEPSKKEWNCKKTTDMILNE
IKQGKFHNPMISIAQILPSLKGKTYLDVPQVTCSPDHEVQPTLPSNPGPGPTSASNITVIYTINN
QLRGVELLFNETINVSVKSGSVLLVLEEQRKNPMFKFETMTSWGLVSSINNIAENVNHK
TYWQFLSGVTPLNEGVDYIPFNHEHITANFTQY with polyhistidine tag at the C-terminus.

产品形式 The protein was lyophilized from a 0.2 µm filtered solution containing 1X PBS, pH 8.0. If you have any concerns or special requirements, please confirm with us.

产品应用 Cell Culture

产品使用

1. Before opening, centrifuge at 3000 rpm for 5 mins.

2. Initial Reconstitution

- Reconstitute the Lyophilized Protein in sterile H₂O to a concentration of 100-200 µg/mL.
- Then, incubate it at room temperature for at least 20 mins to ensure sufficient dissolution.

Do Not Vortex! Vigorous shaking may impair the biological activity of the protein.

- Store at 2°C to 8°C for up to 1 week.

3. Extended Storage

- After the initial reconstitution, further dilute the reconstituted protein in a buffer containing a carrier protein or stabilizer (e.g., 0.1% BSA, 10% FBS, 5% HSA, or 5% trehalose solution). The final concentration is not less than 10 µg/mL.

- Prepare aliquots (≥20 µl).
- Store at -20°C or -80°C for 3 to 6 months.

Avoid repeated freeze-thaw cycles.

产品储存/运输

Lyophilized Protein: Store at -20°C for 1 year.

储存

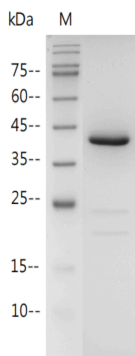
Initial Reconstitution: Store at 2°C to 8°C for up to 1 week.

Extended Storage: Store at -20°C or -80°C for 3 to 6 months with a carrier protein or stabilizer.

运输

Blue Ice

实验数据展示



For Research Use or Further Manufacturing Only

Chamot Biotechnology(Shanghai) Co., Ltd. www.chamot-bio.com

Tel: 021-51880030 Mail: info@chamot-bio.com QQ: 864920491