

CHAMOT

**重组人胰岛素样生长因子-I /Recombinant IGF-I,
Human, Animal-Free**

CM113-100HP

CM113-500HP

CM113-1000HP



CHAMOT

乔默®生物

Specialize In Cytokines



CONTENT

1 产品简介

2 产品使用

3 产品储存/运输

4 实验数据展示

重组人胰岛素样生长因子-I /Recombinant IGF-I, Human, Animal-Free

产品编号	CM113-100HP	CM113-500HP	CM113-1000HP
规格	100 µg	500 µg	1 mg

产品简介

背景描述

Insulin like Growth Factors 1 (IGF-I) is a 7.79 kDa member of the Insulin-like Growth Factors with 71 amino acid residues. IGF-I is mainly expressed from liver, adipose tissue, Endometrial stromal cells, Leydig cells, and can be isolated from plasma. IGF-I mediating the protein anabolic and promoting effect of pituitary growth hormone. IGF-I also affects metabolism of glycogen, DNA synthesis and glucose uptake via binding to IGF-I receptor.

别称

insulin-like growth factor-I, Somatamedin C, IGF-IA

蛋白编码

P05019

分子量

The protein has a calculated MW of 8.59 kDa. The protein migrates as 8-10 kDa under reducing condition (SDS-PAGE analysis).

表达系统

Escherichia coli

纯度

>95% as determined by SDS-PAGE and SEC-HPLC.

生物活性

Measure by its ability to induce MCF-7 cells proliferation. The ED₅₀ for this effect is 0.9-3.1 ng/mL. The specific activity of recombinant human IGF-I is approximately >1.2 x 10³ IU/mg.

内毒素检测

<0.01 EU per 1 µg of the protein by the LAL method.

蛋白序列

MGPETLCGAELVDALQFVCGDRGFYFNKPTGYGSSRRAPQTGIVDECCFRSCDLRRLEMYCA PLKPAKSA with polyhistidine tag at the C-terminus.

产品形式

The protein was lyophilized from a 0.2 µm filtered solution containing 1X PBS, pH 7.4. If you have any concerns or special requirements, please confirm with us.

产品应用

Cell Culture

产品使用

1. Before opening, centrifuge at 3000 rpm for 5 mins.

2.Initial Reconstitution

- Reconstitute the Lyophilized Protein in sterile H₂O to a concentration of 100-200 µg/mL.
- Then, incubate it at room temperature for at least 20 mins to ensure sufficient dissolution.

Do Not Vortex! Vigorous shaking may impair the biological activity of the protein.

- Store at 2°C to 8°C for up to 1 week.

3.Extended Storage

- After the initial reconstitution, further dilute the reconstituted protein in a buffer containing a carrier protein or stabilizer (e.g., 0.1% BSA, 10% FBS, 5% HSA, or 5% trehalose solution). The final concentration is not less than 10 µg/ml.

- Prepare aliquots (≥20 µl).
- Store at -20°C or -80°C for 3 to 6 months.

Avoid repeated freeze-thaw cycles.

产品储存/运输

Lyophilized Protein: Store at -20°C for 1 year.

储存

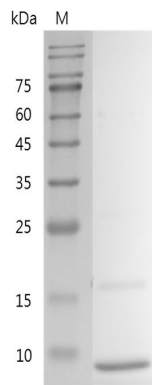
Initial Reconstitution: Store at 2°C to 8°C for up to 1 week.

Extended Storage: Store at -20°C or -80°C for 3 to 6 months with a carrier protein or stabilizer.

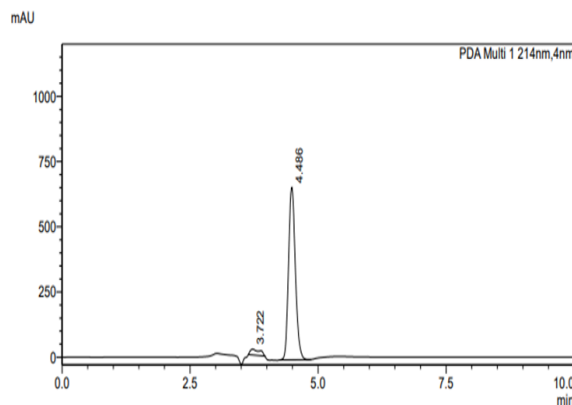
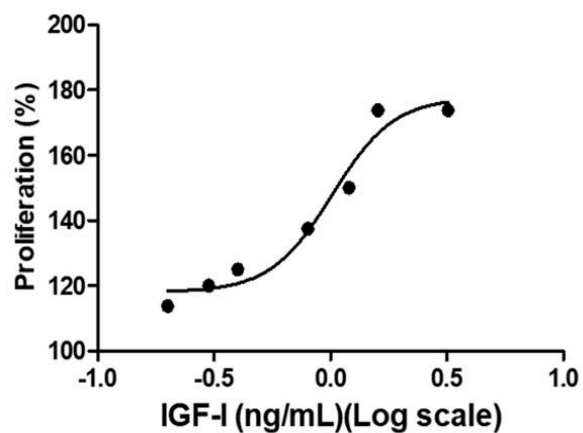
运输

Blue Ice

实验数据展示



ED₅₀ : 0.9084 ng/mL



SDS-PAGE

analysis of
recombinant
human IGF-I

Human IGF-I, His Tag, E. coli induced TF-1 cell
proliferation, with the ED₅₀ at 54.7 pg/mL.

The purity of recombinant human IGF-I is greater than
95% as determined by SEC-HPLC.

For Research Use or Further Manufacturing Only

Chamot Biotechnology(Shanghai) Co., Ltd. www.chamot-bio.com

Tel: 021-51880030 Mail: info@chamot-bio.com QQ: 864920491