

CHAMOT

**重组人基质金属蛋白酶2 /Recombinant MMP2
(Active), Human, Animal-Free**

CM132-5HP

CM132-20HP

CM132-100HP

CM132-500HP

CM132-1000HP



CHAMOT

乔默®生物

Specialize In Cytokines

CONTENT

1 产品简介

2 产品使用

3 产品储存/运输

4 实验数据展示

重组人基质金属蛋白酶2 /Recombinant MMP2 (Active), Human, Animal-Free

产品编号	CM132-5HP	CM132-20HP	CM132-100HP	CM132-500HP	CM132-1000HP
规格	5 µg	20 µg	100 µg	500 µg	1 mg

产品简介

背景描述 Active matrix metalloproteinase-2 (Active MMP-2) is a 63 kDa matrix metalloproteinases with 558 amino acid residues. MMP-2 is mainly expressed from extracellular matrix organization. Functionally, it can degrade type IV collagen and involves processes of the vasculature, angiogenesis, tissue repair, tumor invasion, inflammation, and atherosclerotic plaque rupture.

别称 matrix metalloproteinase-2, Gelatinase A, TBE-1, MMP-II, MONA, MMP-2

蛋白编码 P08253

分子量 The protein has a calculated MW of 63.00 kDa. The protein migrates as 66 kDa under reducing condition (SDS-PAGE analysis).

表达系统 Escherichia coli

纯度 >95% as determined by SDS-PAGE.

生物活性 Testing in process

内毒素检测 <0.1 EU per 1 µg of the protein by the LAL method.

蛋白序列 MYNFFPRKPKWDKNQITYRIIGYTPDLDPETVDDAFARAFQVWSDVTPLRFSRIHDGEADIMI
NFGRWEGDGYPDFGKDGLLAHAFAPGTGVGGDSHFDDDELWTLGEGQVVRVKYGNADG
EYCKFPFLFNGKEYNSCTDTGRSDGFLWCSTTYNFEKDGKYGFCPHEALFTMGGNAEGQPCK
FPFRFQGTSYDSCTTEGRTDGYRWCGTTEDYDRDKKYGFCPETAMSTVGGNSEGAPCVFPFTF
LGNKYESCTSAGRS DGKMWCATTANYDDDRKWGFCPDQGYSLFLVAAHEFGHAMGLEHSQ
DPGALMAPIYTYTKNFRLSQDDIKGIQELYGASPDIDLGTGPTPTLGPVTPEICKQDIVFDGIAQI
RGEIFFFKDRFIWRTVTPRDKPMGPLLVATFWPELPEKIDAVYEAPQEEKAVFFAGNEYWIYSAS
TLERGYPKPLTSLGLPPDVQVRVDAAFNWSKNKKTYIFAGDKFWRYNEVKKKMDPGFPKLIADA
WNAIPDNLDAVVDLQGGGHSYFFKGAYYKLENQSLKSVKFGSIKSDWLGC with
polyhistidine tag at the C-terminus.

产品形式 The protein was lyophilized from a 0.2 µm filtered solution containing 1X PBS, pH 8.0. If you have any concerns or special requirements, please confirm with us.

产品使用

1. Before opening, centrifuge at 3000 rpm for 5 mins.

2. Initial Reconstitution

- Reconstitute the Lyophilized Protein in sterile H₂O to a concentration of 100-200 µg/mL.
- Then, incubate it at room temperature for at least 20 mins to ensure sufficient dissolution.

Do Not Vortex! Vigorous shaking may impair the biological activity of the protein.

- Store at 2°C to 8°C for up to 1 week.

3. Extended Storage

- After the initial reconstitution, further dilute the reconstituted protein in a buffer containing a carrier protein or stabilizer (e.g., 0.1% BSA, 10% FBS, 5% HSA, or 5% trehalose solution). The final concentration is not less than 10 µg/mL.

- Prepare aliquots (≥20 µl).
- Store at -20°C or -80°C for 3 to 6 months.

Avoid repeated freeze-thaw cycles.

产品储存/运输

Lyophilized Protein: Store at -20°C for 1 year.

储存

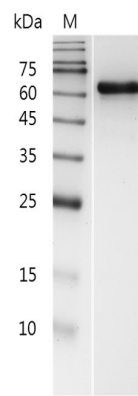
Initial Reconstitution: Store at 2°C to 8°C for up to 1 week.

Extended Storage: Store at -20°C or -80°C for 3 to 6 months with a carrier protein or stabilizer.

运输

Blue Ice

实验数据展示



SDS-PAGE analysis of recombinant human MMP2 (active)

For Research Use or Further Manufacturing Only

Chamot Biotechnology(Shanghai) Co., Ltd. www.chamot-bio.com

Tel: 021-51880030 Mail: info@chamot-bio.com QQ: 864920491