

# CHAMOT

**重组小鼠粒细胞集落刺激因子 /Recombinant G-CSF,  
Mouse, Animal-Free**

CM062-5MP

CM062-20MP

CM062-100MP

CM062-500MP

CM062-1000MP



CHAMOT

乔默®生物

*Specialize In Cytokines*

# CONTENT

1 产品简介

2 产品使用

3 产品储存/运输

4 实验数据展示

## 重组小鼠粒细胞集落刺激因子 /Recombinant G-CSF, Mouse, Animal-Free

产品编号	CM062-5MP	CM062-20MP	CM062-100MP	CM062-500MP	CM062-1000MP
规格	5 µg	20 µg	100 µg	500 µg	1 mg

### 产品简介

#### 背景描述

Granulocyte Colony-Stimulating Factor (G-CSF) is a 18.67 kDa protein containing 207 amino acid which secreted by monocytes, macrophages, fibroblasts, and endothelial cells, regulates cell growth, maturation, and development of myeloid cells. G-CSF is a member of the CSF family of glycoproteins, and makes the bone marrow produce more white blood cells so it can reduce the risk of infection after some types of cancer treatment. G-CSF is also an established useful clinical agent for increasing neutrophilic granulocytes levels. Mouse G-CSF shares 73% sequence homology with human G-CSF.

#### 别称

granulocyte colony-stimulating factor, CSF-3, MGI-1G, pluripoiectin, CSF3

#### 蛋白编码

P09920

#### 分子量

The protein has a calculated MW of 19.76 kDa. The protein migrates as 17-25 kDa under reducing condition (SDS-PAGE analysis).

#### 表达系统

Escherichia coli

#### 纯度

>98% as determined by SDS-PAGE.

#### 生物活性

Measure by its ability to induce proliferation in NFS-60 cells. The ED<sub>50</sub> for this effect is <1 ng/mL.

#### 内毒素检测

<0.1 EU per 1 µg of the protein by the LAL method.

#### 蛋白序列

VPLVTVSALPPSLPLPRSFLLKSLEQVRKIQASGSVLLEQLCATYKLCHPEELVLLGHSLGIPKASLS GCSSQALQQTQCLSQLHSGLCCLYQGLLQALSGISPALAPTLDLLQLDVANFATTIWQQMENLG VAPTVQPTQSAMPAFTSAFQRRAGGVLAISYLQGFLETARLALHHLA with polyhistidine tag at the N- terminus.

#### 产品形式

The protein was lyophilized from a 0.2 µm filtered solution containing 1X PBS, pH 7.4. If you have any concerns or special requirements, please confirm with us.

## 产品使用

1. Before opening, centrifuge at 3000 rpm for 5 mins.

### 2. Initial Reconstitution

- Reconstitute the Lyophilized Protein in sterile H<sub>2</sub>O to a concentration of 100-200 µg/mL.
- Then, incubate it at room temperature for at least 20 mins to ensure sufficient dissolution.

Do Not Vortex! Vigorous shaking may impair the biological activity of the protein.

- Store at 2°C to 8°C for up to 1 week.

### 3. Extended Storage

- After the initial reconstitution, further dilute the reconstituted protein in a buffer containing a carrier protein or stabilizer (e.g., 0.1% BSA, 10% FBS, 5% HSA, or 5% trehalose solution). The final concentration is not less than 10 µg/mL.

- Prepare aliquots (≥20 µl).
- Store at -20°C or -80°C for 3 to 6 months.

Avoid repeated freeze-thaw cycles.

## 产品储存/运输

### 储存

**Lyophilized Protein:** Store at -20°C for 1 year.

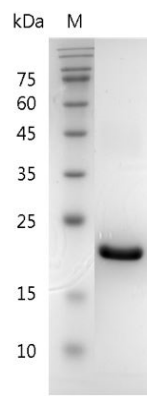
**Initial Reconstitution:** Store at 2°C to 8°C for up to 1 week.

**Extended Storage:** Store at -20°C or -80°C for 3 to 6 months with a carrier protein or stabilizer.

### 运输

Blue Ice

## 实验数据展示



SDS-PAGE analysis of recombinant mouse G-CSF

For Research Use or Further Manufacturing Only

Chamot Biotechnology(Shanghai) Co., Ltd. [www.chamot-bio.com](http://www.chamot-bio.com)

Tel: 021-51880030 Mail: [info@chamot-bio.com](mailto:info@chamot-bio.com) QQ: 864920491