

CHAMOT

**重组小鼠高迁移率族蛋白B1 /Recombinant HMGB1,
Mouse, Animal-Free**

CM054-5MP

CM054-20MP

CM054-100MP

CM054-500MP

CM054-1000MP



CHAMOT

乔默®生物

Specialize In Cytokines



CONTENT

1 产品简介

2 产品使用

3 产品储存/运输

4 实验数据展示

重组小鼠高迁移率族蛋白B1 /Recombinant HMGB1, Mouse, Animal-Free

产品编号	CM054-5MP	CM054-20MP	CM054-100MP	CM054-500MP	CM054-1000MP
规格	5 µg	20 µg	100 µg	500 µg	1 mg

产品简介

背景描述

High Mobility Group protein B1 protein (HMGB1) is the high mobility group box family of non-histone chromosomal proteins. Human HMGB1 is expressed as a 25 kDa single chain polypeptide containing three domains: two N-terminal HMG boxes A and B, and a negatively charged 30 a.a. C-terminal region that contains only Asp and Glu. Post-translational modification on HMGB1 have been reported, affects its localization, receptor interactions, and function. HMGB1, with a disulfide bond between C23 and C45, have been reported that cause cytokine production and the activation of NF-κB. Otherwise, the fully oxidized form has no immune function, losing its proinflammatory effect and the apoptotic cell death activation function.

别称

high mobility group box 1, HMG-1, Hmg1, SBP, SBP-1, amph, p30

蛋白编码

P63158

分子量

The protein has a calculated MW of 25.56 kDa. The protein migrates as 25-35 kDa under reducing condition (SDS-PAGE analysis).

表达系统

Escherichia coli

纯度

>95% as determined by SDS-PAGE.

生物活性

Measure by its ability to induce TNF alpha in RAW264.7 cells. The ED₅₀ for this effect is <15 ng/mL.

内毒素检测

<0.1 EU per 1 µg of the protein by the LAL method.

蛋白序列

MGKGDPPKPRGKMSSYAFFVQTCREEHKKKHPDASVNFSEFSKKCSERWKTMSAKEKGKFED
MAKADKARYEREMKTYIPPKGETKKKFKDPNAPKRPPSAFFLCSEYRPKIKGEHPGLSIGDVA
KKLGEMWNNTAADDKQPYEKKAALKKEKYEKDIAAYRAKGKPDAAKKGVVKAESKKKKEEE
DDEEDEDEEEEEEEDEDEEEDDDDE with polyhistidine tag at the C-terminus

产品形式

The protein was lyophilized from a 0.2 µm filtered solution containing 1X PBS, pH 7.4. If you have any concerns or special requirements, please confirm with us.

产品使用

1. Before opening, centrifuge at 3000 rpm for 5 mins.

2. Initial Reconstitution

- Reconstitute the Lyophilized Protein in sterile H₂O to a concentration of 100-200 µg/mL.
- Then, incubate it at room temperature for at least 20 mins to ensure sufficient dissolution.

Do Not Vortex! Vigorous shaking may impair the biological activity of the protein.

- Store at 2°C to 8°C for up to 1 week.

3. Extended Storage

- After the initial reconstitution, further dilute the reconstituted protein in a buffer containing a carrier protein or stabilizer (e.g., 0.1% BSA, 10% FBS, 5% HSA, or 5% trehalose solution). The final concentration is not less than 10 µg/mL.

- Prepare aliquots (≥20 µl).
- Store at -20°C or -80°C for 3 to 6 months.

Avoid repeated freeze-thaw cycles.

产品储存/运输

Lyophilized Protein: Store at -20°C for 1 year.

储存

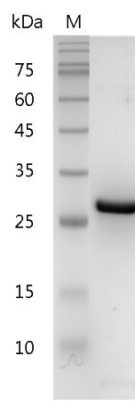
Initial Reconstitution: Store at 2°C to 8°C for up to 1 week.

Extended Storage: Store at -20°C or -80°C for 3 to 6 months with a carrier protein or stabilizer.

运输

Blue Ice

实验数据展示



SDS-PAGE analysis of recombinant mouse HMGB1

For Research Use or Further Manufacturing Only

Chamot Biotechnology(Shanghai) Co., Ltd. www.chamot-bio.com

Tel: 021-51880030 Mail: info@chamot-bio.com QQ: 864920491