

# CHAMOT

**重组小鼠胰岛素样生长因子-I /Recombinant IGF-I,  
Mouse, Animal-Free**

CM094-20MP

CM094-100MP

CM094-500MP

CM094-1000MP



CHAMOT

乔默®生物

*Specialize In Cytokines*



# CONTENT

1 产品简介

2 产品使用

3 产品储存/运输

4 实验数据展示

5 文献引用

## 重组小鼠胰岛素样生长因子-I /Recombinant IGF-I, Mouse, Animal-Free

产品编号	CM094-20MP	CM094-100MP	CM094-500MP	CM094-1000MP
规格	20 µg	100 µg	500 µg	1 mg

### 产品简介

#### 背景描述

Insulin Like Growth Factors 1 (IGF-I) is a 7.81 kDa member of the Insulin-like Growth Factors with 71 amino acid residues. IGF-I is mainly expressed from liver, adipose tissue, cervi, endometrial stromal cells, leydig cells, and can be isolated from plasma. IGF-I is mediating the protein anabolic and promoting effect of pituitary growth hormone. IGF-I also affects metabolism of glycogen, DNA synthesis and glucose uptake via binding to IGF-I receptor.

#### 别称

insulin-like growth factor-I, Somatamedin C, IGF-IA

#### 蛋白编码

P05017

#### 分子量

The protein has a calculated MW of 8.61 kDa. The protein migrates as 11-17 kDa under reducing condition (SDS-PAGE analysis).

#### 表达系统

Escherichia coli

#### 纯度

>98% as determined by SDS-PAGE.

#### 生物活性

Measure by its ability to induce MCF-7 cells proliferation. The ED<sub>50</sub> for this effect is <2 ng/mL. The specific activity of recombinant mouse IGF-I is > 5 x 10<sup>5</sup> IU/mg.

#### 内毒素检测

<0.1 EU per 1 µg of the protein by the LAL method.

#### 蛋白序列

MGPETLCGAELVDALQFVCGPRGFYFNKPTGYGSSIRRAPQTGIVDECCFRSCDLRRLEMYCAP LKPTKAA with polyhistidine tag at the C-terminus.

#### 产品形式

The protein was lyophilized from a 0.2 µm filtered solution containing 1X PBS, pH 8.0. If you have any concerns or special requirements, please confirm with us.

#### 产品应用

Cell Culture

### 产品使用

1. Before opening, centrifuge at 3000 rpm for 5 mins.

## 2. Initial Reconstitution

- Reconstitute the Lyophilized Protein in sterile H<sub>2</sub>O to a concentration of 100-200 µg/mL.
- Then, incubate it at room temperature for at least 20 mins to ensure sufficient dissolution.

*Do Not Vortex! Vigorous shaking may impair the biological activity of the protein.*

- Store at 2°C to 8°C for up to 1 week.

## 3. Extended Storage

- After the initial reconstitution, further dilute the reconstituted protein in a buffer containing a carrier protein or stabilizer (e.g., 0.1% BSA, 10% FBS, 5% HSA, or 5% trehalose solution). The final concentration is not less than 10 µg/ml.
- Prepare aliquots (≥20 µl).
- Store at -20°C or -80°C for 3 to 6 months.

*Avoid repeated freeze-thaw cycles.*

## 产品储存/运输

**Lyophilized Protein:** Store at -20°C for 1 year.

### 储存

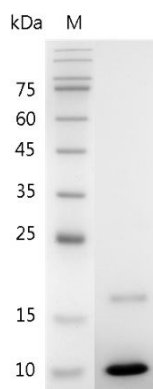
**Initial Reconstitution:** Store at 2°C to 8°C for up to 1 week.

**Extended Storage:** Store at -20°C or -80°C for 3 to 6 months with a carrier protein or stabilizer.

### 运输

Blue Ice

## 实验数据展示



SDS-PAGE analysis of recombinant mouse IGF-I

## 文献引用

- Consecutive Hybrid Bioprinting of Microfiber-Reinforced Living Muscle Constructs with Highly-Aligned Cellular Organizations. Adv Mater. 2025 Sep 2:e10222. (IF 26.8)(Mouse IGF-I)

For Research Use or Further Manufacturing Only

Chamot Biotechnology(Shanghai) Co., Ltd. [www.chamot-bio.com](http://www.chamot-bio.com)

Tel: 021-51880030    Mail: [info@chamot-bio.com](mailto:info@chamot-bio.com)    QQ: 864920491