

# CHAMOT

**重组小鼠白细胞介素15 /Recombinant IL-15,  
Mouse, Animal-Free**

CM013-5MP

CM013-20MP

CM013-100MP

CM013-500MP

CM013-1000MP



CHAMOT

乔默®生物

*Specialize In Cytokines*



# CONTENT

1 产品简介

2 产品使用

3 产品储存/运输

4 实验数据展示

## 重组小鼠白细胞介素15 /Recombinant IL-15, Mouse, Animal-Free

产品编号	CM013-5MP	CM013-20MP	CM013-100MP	CM013-500MP	CM013-1000MP
规格	5 µg	20 µg	100 µg	500 µg	1 mg

### 产品简介

#### 背景描述

Interleukin-15 (IL-15) is a 14-15 kDa glycoprotein with immune regulatory functions in many diverse cell types. IL-15 can be constitutively expressed in a variety of cell types stored as intracellular protein in the cytoplasm as well as transport to the cell surface, while only secreted from some cell types including monocytes, dendritic cells, epithelial cells, bone marrow stromal cells, and fibroblasts. As a pleiotropic cytokine, IL-15 mediates the crosstalk between innate immunity and adaptive immunity whose principal role is to kill virally infected cells. IL-15 plays a crucial role in the development, differentiation, and survival of NK cells. In monocytes, IL-15 induces the production of IL-8 and monocyte chemotactic protein 1 (MCP-1), which recruits neutrophils and monocytes to sites of infection. IL-15 can also act as a chemo-attractant in T lymphocytes and regulate the differentiation of T lymphocytes.

**别称** interleukin 15, IL-T, IL15

**蛋白编码** P48346

**分子量** The protein has a calculated MW of 14.2 kDa. The protein migrates as 17 kDa under reducing condition (SDS-PAGE analysis).

**表达系统** Escherichia coli

**纯度** >98% as determined by SDS-PAGE.

**生物活性** Measure by its ability to induce CTLL-2 cells proliferation. The ED<sub>50</sub> for this effect is <10 ng/mL. The specific activity of recombinant mouse IL-15 is approximately >1x 10<sup>5</sup> IU/mg.

**内毒素检测** <0.1 EU per 1 µg of the protein by the LAL method.

**蛋白序列** NWIDVRYDLEKIESLIQSIHIDTTLYTDSDFHPSCCKVTAMNCFLELQVILHEYSNMTLNETVRN VLYLANSTLSSNKNVAESGCKECEELEKTFTEFLQSFIRIVQMFINTS with polyhistidine tag at the N-terminus.

**产品形式**

The protein was lyophilized from a 0.2 µm filtered solution of Proleukin buffer, pH 7.5. If you have any concerns or special requirements, please confirm with us.

**产品应用**

Cell Culture

**产品使用**

1. Before opening, centrifuge at 3000 rpm for 5 mins.

**2. Initial Reconstitution**

- Reconstitute the Lyophilized Protein in sterile H<sub>2</sub>O to a concentration of 100-200 µg/mL.
- Then, incubate it at room temperature for at least 20 mins to ensure sufficient dissolution.

*Do Not Vortex! Vigorous shaking may impair the biological activity of the protein.*

- Store at 2°C to 8°C for up to 1 week.

**3. Extended Storage**

- After the initial reconstitution, further dilute the reconstituted protein in a buffer containing a carrier protein or stabilizer (e.g., 0.1% BSA, 10% FBS, 5% HSA, or 5% trehalose solution). The final concentration is not less than 10 µg/ml.

- Prepare aliquots (≥20 µl).
- Store at -20°C or -80°C for 3 to 6 months.

*Avoid repeated freeze-thaw cycles.*

**产品储存/运输****储存**

**Lyophilized Protein:** Store at -20°C for 1 year.

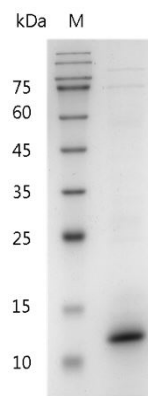
**Initial Reconstitution:** Store at 2°C to 8°C for up to 1 week.

**Extended Storage:** Store at -20°C or -80°C for 3 to 6 months with a carrier protein or stabilizer.

**运输**

Blue Ice

**实验数据展示**



SDS-PAGE analysis of recombinant mouse IL-15

For Research Use or Further Manufacturing Only

Chamot Biotechnology(Shanghai) Co., Ltd. [www.chamot-bio.com](http://www.chamot-bio.com)

Tel: 021-51880030 Mail: [info@chamot-bio.com](mailto:info@chamot-bio.com) QQ: 864920491