

CHAMOT

**重组人肌管蛋白 /Recombinant MTM1, Human,
Animal-Free**

CM189-5HP

CM189-20HP

CM189-100HP

CM189-500HP

CM189-1000HP



CHAMOT

乔默®生物

Specialize In Cytokines



CONTENT

1 产品简介

2 产品使用

3 产品储存/运输

4 实验数据展示

重组人肌管蛋白 /Recombinant MTM1, Human, Animal-Free

产品编号	CM189-5HP	CM189-20HP	CM189-100HP	CM189-500HP	CM189-1000HP
规格	5 µg	20 µg	100 µg	500 µg	1 mg

产品简介

背景描述

Myotubularin is a protein that plays a crucial role in cellular processes and is primarily associated with a rare genetic disorder called myotubular myopathy (MTM). This disorder primarily affects skeletal muscles and is characterized by severe muscle weakness and impaired motor function. Myotubularin is an enzyme that regulates the levels of a lipid molecule called phosphatidylinositol 3-phosphate (PI3P) within cells. PI3P is involved in various cellular functions, including membrane trafficking and signaling pathways. Mutations in the gene encoding myotubularin lead to a deficiency or loss of its enzymatic activity, disrupting PI3P metabolism and causing the development of MTM.

别称

Phosphatidylinositol-3,5-bisphosphate 3-phosphatase, Phosphatidylinositol-3-phosphate phosphatase, CG2

蛋白编码

Q13496

分子量

The protein has a calculated MW of 70.75 kDa. The protein migrates as 60 kDa under reducing condition (SDS-PAGE analysis).

表达系统

Escherichia coli

纯度

>95% as determined by SDS-PAGE analysis.

生物活性

Testing in process

内毒素检测

<1 EU per 1 µg of the protein by the LAL method.

蛋白序列

A DNA sequence encoding Human MTM1 Protein (#Q13496)(Met1-Phe603) was expressed with polyhistidine tag at the N-terminus.

产品形式

The protein was lyophilized from a 0.2 µm filtered solution containing 1X PBS, pH 7.4. If you have any concerns or special requirements, please confirm with us.

产品应用

Cell Culture

产品使用

1. Before opening, centrifuge at 3000 rpm for 5 mins.

2. Initial Reconstitution

- Reconstitute the Lyophilized Protein in sterile H₂O to a concentration of 100-200 µg/mL.
- Then, incubate it at room temperature for at least 20 mins to ensure sufficient dissolution.

Do Not Vortex! Vigorous shaking may impair the biological activity of the protein.

- Store at 2°C to 8°C for up to 1 week.

3. Extended Storage

- After the initial reconstitution, further dilute the reconstituted protein in a buffer containing a carrier protein or stabilizer (e.g., 0.1% BSA, 10% FBS, 5% HSA, or 5% trehalose solution). The final concentration is not less than 10 µg/mL.

- Prepare aliquots (≥20 µl).
- Store at -20°C or -80°C for 3 to 6 months.

Avoid repeated freeze-thaw cycles.

产品储存/运输

Lyophilized Protein: Store at -20°C for 1 year.

储存

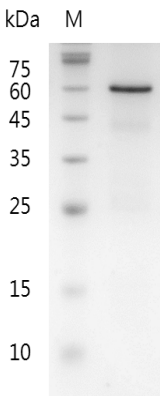
Initial Reconstitution: Store at 2°C to 8°C for up to 1 week.

Extended Storage: Store at -20°C or -80°C for 3 to 6 months with a carrier protein or stabilizer.

运输

Blue Ice

实验数据展示



For Research Use or Further Manufacturing Only

Chamot Biotechnology(Shanghai) Co., Ltd. www.chamot-bio.com

Tel: 021-51880030 Mail: info@chamot-bio.com QQ: 864920491