

CHAMOT

重组人胰岛素 /Recombinant Insulin, Human, AF

CM195-20MHP

CM195-100MHP

CM195-500MHP

CM195-1GHP



CHAMOT

乔默®生物

Specialize In Cytokines



CONTENT

1 产品简介

2 产品使用

3 产品储存/运输

4 实验数据展示

重组人胰岛素 /Recombinant Insulin, Human, AF

产品编号	CM195-20MHP	CM195-100MHP	CM195-500MHP	CM195-1GHP
规格	20 mg	100 mg	500 mg	1 g

产品简介

背景描述 Insulin is a peptide hormone consisting of a double-chain structure (α , β) secreted by pancreatic β cells. It is the only known endogenous protein hormone capable of lowering blood sugar levels. Insulin not only regulates the intake, utilization, and storage of glucose, amino acids, and fatty acids in cells but also promotes the synthesis of glycogen, fats, and proteins.

别称 INS, IRDN, IDDM2, Preproinsulin, ILPR, Insulin, MODY10, Proinsulin

蛋白编码 P01308

分子量 The protein has a calculated MW of 5.81 kDa. The protein migrates as 5 kDa under reducing condition (SDS-PAGE analysis).

表达系统 Escherichia coli

纯度 >95% as determined by SDS-PAGE.

生物活性 Testing in process

内毒素检测 <0.1 EU per 1 μ g of the protein by the LAL method.

蛋白序列 A DNA sequence encoding Human Insulin Protein(#P01308) (Phe25-Asn110) was expressed.

产品形式 The protein was lyophilized from a 0.2 μ m filtered solution containing 1X PBS, pH 8.0. If you have any concerns or special requirements, please confirm with us.

产品应用 Cell Culture

产品使用

1. Before opening, centrifuge at 3000 rpm for 5 mins.

2.Reconstitution

- Reconstitute the Lyophilized Protein in sterile 10 mM HCl to a concentration of 1-2 mg/mL.
- Then, incubate it at room temperature for at least 20 mins to ensure sufficient dissolution.

Do Not Vortex! Vigorous shaking may impair the biological activity of the protein.

- Prepare aliquots.
- Store at -20°C or -80°C for 1 month.

Avoid repeated freeze-thaw cycles.

产品储存/运输

储存

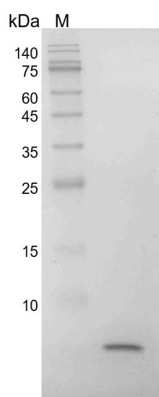
Lyophilized Protein: Store at -20°C for 1 year.

Reconstitution: Store at -20°C or -80°C for 1 month.

运输

Blue Ice

实验数据展示



SDS-PAGE analysis of recombinant human Insulin

For Research Use or Further Manufacturing Only

Chamot Biotechnology(Shanghai) Co., Ltd. www.chamot-bio.com

Tel: 021-51880030 Mail: info@chamot-bio.com QQ: 864920491