

CHAMOT

**重组犬细胞毒性T淋巴细胞相关蛋白4 /Recombinant
CTLA-4, Canine, HEK293, Animal-Free**

CM002-5CP

CM002-20CP

CM002-100CP

CM002-500CP

CM002-1000CP



CHAMOT

乔默®生物

Specialize In Cytokines

CONTENT

1 产品简介

2 产品使用

3 产品储存/运输

4 实验数据展示

重组犬细胞毒性T淋巴细胞相关蛋白4 /Recombinant CTLA-4, Canine, HEK293, Animal-Free

产品编号	CM002-5CP	CM002-20CP	CM002-100CP	CM002-500CP	CM002-1000CP
规格	5 µg	20 µg	100 µg	500 µg	1 mg

产品简介

背景描述

CTLA-4 is a protein belonging to the immunoglobulin superfamily and the CD28 receptor family. It interacts with CD80 (B7-1) and CD86 (B7-2) to transmit inhibitory signals to T cells, in contrast to CD28, which sends stimulatory signals. This receptor is also found within regulatory T cells, where it plays a vital role in their functions. CTLA-4 is a key regulator of T cell activation, making it an appealing candidate for autoimmune disease therapy and cancer immunotherapy. Recent evidence further highlights its importance in the function and balance of regulatory T cells (Treg).

别称

CD152

蛋白编码

NP_001003106.1

分子量

The protein has a calculated MW of 14 kDa. The protein migrates as 18-23 kDa under reducing condition (SDS-PAGE analysis).

表达系统

HEK293 cell

纯度

>90% as determined by SDS-PAGE analysis.

生物活性

Testing in process

内毒素检测

<0.1 EU per 1 µg of the protein by the LAL method.

蛋白序列

A DNA sequence encoding Canine CTLA-4 Protein (#NP_001003106.1)(Lys36-Asp161) was expressed with polyhistidine tag at the C-terminus.

产品形式

The protein was lyophilized from a 0.2 µm filtered solution containing 1X PBS, pH 7.4. If you have any concerns or special requirements, please confirm with us.

产品应用

Cell Culture

产品使用

1. Before opening, centrifuge at 3000 rpm for 5 mins.

2. Initial Reconstitution

- Reconstitute the Lyophilized Protein in sterile H₂O to a concentration of 100-200 µg/mL.
- Then, incubate it at room temperature for at least 20 mins to ensure sufficient dissolution.

Do Not Vortex! Vigorous shaking may impair the biological activity of the protein.

- Store at 2°C to 8°C for up to 1 week.

3. Extended Storage

- After the initial reconstitution, further dilute the reconstituted protein in a buffer containing a carrier protein or stabilizer (e.g., 0.1% BSA, 10% FBS, 5% HSA, or 5% trehalose solution). The final concentration is not less than 10 µg/ml.
- Prepare aliquots (≥20 µl).
- Store at -20°C or -80°C for 3 to 6 months.

Avoid repeated freeze-thaw cycles.

产品储存/运输

Lyophilized Protein: Store at -20°C for 1 year.

储存

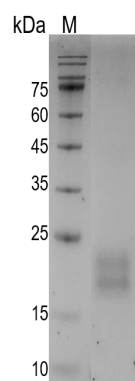
Initial Reconstitution: Store at 2°C to 8°C for up to 1 week.

Extended Storage: Store at -20°C or -80°C for 3 to 6 months with a carrier protein or stabilizer.

运输

Blue Ice

实验数据展示



SDS-PAGE analysis of recombinant canine CTLA-4

For Research Use or Further Manufacturing Only

Chamot Biotechnology(Shanghai) Co., Ltd. www.chamot-bio.com

Tel: 021-51880030 Mail: info@chamot-bio.com QQ: 864920491