

# CHAMOT

**重组猪趋化因子CCL2 /Recombinant CCL2, Swine,  
Animal-Free**

CM021-5SP

CM021-20SP

CM021-100SP

CM021-500SP

CM021-1000SP



CHAMOT

乔默®生物

*Specialize In Cytokines*

# CONTENT

1 产品简介

2 产品使用

3 产品储存/运输

4 实验数据展示

## 重组猪趋化因子CCL2 /Recombinant CCL2, Swine, Animal-Free

产品编号	CM021-5SP	CM021-20SP	CM021-100SP	CM021-500SP	CM021-1000SP
规格	5 µg	20 µg	100 µg	500 µg	1 mg

### 产品简介

#### 背景描述

CCL2 (Chemokine ligand 2) is also named for the MCP1 (monocyte chemoattractant protein 1) which is a cytokine of CC chemokine family. CCL2 plays an important role in the recruitment of T cell and monocyte during inflammation, which is induced by the infection. CCL2 is secreted from the osteoblasts which is under the mediation of the NF-κB pathway. In cancer therapy, CCL2 plays an important role in increasing the anti-tumor capability of monocytes and neutrophils.

#### 别称

C-C Motif Chemokine Ligand 2, MCP-1

#### 蛋白编码

P42831

#### 分子量

The protein has a calculated MW of 9.42 kDa. The protein migrates as 11-17 kDa under reducing condition (SDS-PAGE analysis).

#### 表达系统

Escherichia coli

#### 纯度

>98% as determined by SDS-PAGE.

#### 生物活性

Testing in process

#### 内毒素检测

<0.1 EU per 1 µg of the protein by the LAL method.

#### 蛋白序列

QPDAINSPVTCCYTLTSKKISMQRRLMSYRRVTSSKCPKEAVIFKTIAGKEICAEPKQKWVQDSIS  
HLDKKNQTPKP with polyhistidine tag at the N-terminus.

#### 产品形式

The protein was lyophilized from a 0.2 µm filtered solution containing 1X PBS, pH 7.4. If you have any concerns or special requirements, please confirm with us.

#### 产品应用

Cell Culture

### 产品使用

1. Before opening, centrifuge at 3000 rpm for 5 mins.

## 2. Initial Reconstitution

- Reconstitute the Lyophilized Protein in sterile H<sub>2</sub>O to a concentration of 100-200 µg/mL.
- Then, incubate it at room temperature for at least 20 mins to ensure sufficient dissolution.

*Do Not Vortex! Vigorous shaking may impair the biological activity of the protein.*

- Store at 2°C to 8°C for up to 1 week.

## 3. Extended Storage

- After the initial reconstitution, further dilute the reconstituted protein in a buffer containing a carrier protein or stabilizer (e.g., 0.1% BSA, 10% FBS, 5% HSA, or 5% trehalose solution). The final concentration is not less than 10 µg/ml.
- Prepare aliquots (≥20 µl).
- Store at -20°C or -80°C for 3 to 6 months.

*Avoid repeated freeze-thaw cycles.*

## 产品储存/运输

**Lyophilized Protein:** Store at -20°C for 1 year.

### 储存

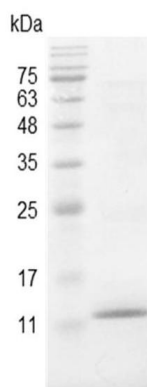
**Initial Reconstitution:** Store at 2°C to 8°C for up to 1 week.

**Extended Storage:** Store at -20°C or -80°C for 3 to 6 months with a carrier protein or stabilizer.

### 运输

Blue Ice

## 实验数据展示



SDS-PAGE analysis of recombinant swine CCL2

For Research Use or Further Manufacturing Only

Chamot Biotechnology(Shanghai) Co., Ltd. [www.chamot-bio.com](http://www.chamot-bio.com)

Tel: 021-51880030 Mail: [info@chamot-bio.com](mailto:info@chamot-bio.com) QQ: 864920491