

CHAMOT

**重组猪粒细胞-巨噬细胞集落刺激因子 /Recombinant
GM-CSF, Swine, Animal-Free**

CM017-5SP

CM017-20SP

CM017-100SP

CM017-500SP

CM017-1000SP



CHAMOT

乔默®生物

Specialize In Cytokines

CONTENT

1 产品简介

2 产品使用

3 产品储存/运输

4 实验数据展示

重组猪粒细胞-巨噬细胞集落刺激因子 /Recombinant GM-CSF, Swine, Animal-Free

产品编号	CM017-5SP	CM017-20SP	CM017-100SP	CM017-500SP	CM017-1000SP
规格	5 µg	20 µg	100 µg	500 µg	1 mg

产品简介

背景描述 Granulocyte-macrophage colony-stimulating factor (GM-CSF) was first identified as a Growth Factors due to its ability to induce proliferation and differentiation of bone marrow progenitors into granulocytes and macrophages. GM-CSF is produced by multiple cell types including activated T cells, B cells, macrophages, endothelial cells and fibroblasts upon receiving immune stimuli. GM-CSF stimulates stem cells to produce granulocytes and monocytes functions as a cytokine.

别称 granulocyte-macrophage colony-stimulating factor, CSF2

蛋白编码 Q29118

分子量 The protein has a calculated MW of 15.3 kDa. The protein migrates as 17 kDa under reducing condition (SDS-PAGE analysis).

表达系统 Escherichia coli

纯度 >98% as determined by SDS-PAGE.

生物活性 Measure by its ability to induce proliferation in TF-1 cells. The ED₅₀ for this effect is <3 ng/mL.

内毒素检测 <0.1 EU per 1 µg of the protein by the LAL method.

蛋白序列 APTRPPSPVTRPWQHVDAlKEALSLLNNSNDTAAVMNETVDVVCEMFDPQEPTCVQTRLNLY KQGLRGSLTRLKSPLTLLAKHYEQHCPLTEETSCETQSITFKSFKDSL NKFLFTIPFDCWGPVKK with polyhistidine tag at the N-terminus.

产品形式 The protein was lyophilized from a 0.2 µm filtered solution containing 1X PBS, pH 7.4. If you have any concerns or special requirements, please confirm with us.

产品应用 Cell Culture

产品使用

1. Before opening, centrifuge at 3000 rpm for 5 mins.

2. Initial Reconstitution

- Reconstitute the Lyophilized Protein in sterile H₂O to a concentration of 100-200 µg/mL.
- Then, incubate it at room temperature for at least 20 mins to ensure sufficient dissolution.

Do Not Vortex! Vigorous shaking may impair the biological activity of the protein.

- Store at 2°C to 8°C for up to 1 week.

3. Extended Storage

- After the initial reconstitution, further dilute the reconstituted protein in a buffer containing a carrier protein or stabilizer (e.g., 0.1% BSA, 10% FBS, 5% HSA, or 5% trehalose solution). The final concentration is not less than 10 µg/mL.

- Prepare aliquots (≥20 µl).
- Store at -20°C or -80°C for 3 to 6 months.

Avoid repeated freeze-thaw cycles.

产品储存/运输

Lyophilized Protein: Store at -20°C for 1 year.

储存

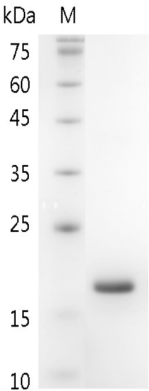
Initial Reconstitution: Store at 2°C to 8°C for up to 1 week.

Extended Storage: Store at -20°C or -80°C for 3 to 6 months with a carrier protein or stabilizer.

运输

Blue Ice

实验数据展示



For Research Use or Further Manufacturing Only

Chamot Biotechnology(Shanghai) Co., Ltd. www.chamot-bio.com

Tel: 021-51880030 Mail: info@chamot-bio.com QQ: 864920491