

CHAMOT

**重组猪表皮生长因子 /Recombinant EGF, Swine,
Animal-Free**

CM018-100SP

CM018-500SP

CM018-1000SP



CHAMOT

乔默®生物

Specialize In Cytokines



CONTENT

1 产品简介

2 产品使用

3 产品储存/运输

4 实验数据展示

重组猪表皮生长因子 /Recombinant EGF, Swine, Animal-Free

产品编号	CM018-100SP	CM018-500SP	CM018-1000SP
规格	100 µg	500 µg	1 mg

产品简介

背景描述 EGF is mainly secreted from ectodermal cells, monocytes, kidney and duodenal glands. Upon binding to its receptor, EGFR, EGF acts to stimulate cell growth and proliferation of epithelial cells, play important roles in many developmental processes including accelerate tooth eruption, inhibits gastric acid secretion, and involve in wound healing.

别称 epidermal growth factor, MIG

蛋白编码 Q00968

分子量 The protein has a calculated MW of 7.09 kDa. The protein migrates below 11 kDa under reducing condition (SDS-PAGE analysis).

表达系统 Escherichia coli

纯度 >95% as determined by SDS-PAGE.

生物活性 Testing in process

内毒素检测 <0.1 EU per 1 µg of the protein by the LAL method.

蛋白序列 MNSYSECPPSHDGYCLHGGVCMYIEAVDSYACNCVFGYVGERCQHRDLKWWELR with polyhistidine tag at the C-terminus.

产品形式 The protein was lyophilized from a 0.2 µm filtered solution containing 1X PBS, pH 8.0. If you have any concerns or special requirements, please confirm with us.

产品应用 Cell Culture

产品使用

1. Before opening, centrifuge at 3000 rpm for 5 mins.

2. Initial Reconstitution

- Reconstitute the Lyophilized Protein in sterile H₂O to a concentration of 100-200 µg/mL.
- Then, incubate it at room temperature for at least 20 mins to ensure sufficient dissolution.
Do Not Vortex! Vigorous shaking may impair the biological activity of the protein.
- Store at 2°C to 8°C for up to 1 week.

3. Extended Storage

- After the initial reconstitution, further dilute the reconstituted protein in a buffer containing a carrier protein or stabilizer (e.g., 0.1% BSA, 10% FBS, 5% HSA, or 5% trehalose solution). The final concentration is not less than 10 µg/ml.
- Prepare aliquots (≥20 µl).
- Store at -20°C or -80°C for 3 to 6 months.
Avoid repeated freeze-thaw cycles.

产品储存/运输

Lyophilized Protein: Store at -20°C for 1 year.

储存

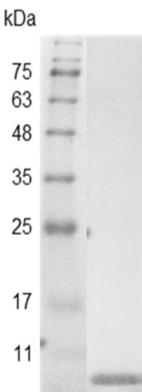
Initial Reconstitution: Store at 2°C to 8°C for up to 1 week.

Extended Storage: Store at -20°C or -80°C for 3 to 6 months with a carrier protein or stabilizer.

运输

Blue Ice

实验数据展示



SDS-PAGE analysis of recombinant swine EGF

For Research Use or Further Manufacturing Only

Chamot Biotechnology(Shanghai) Co., Ltd. www.chamot-bio.com

Tel: 021-51880030 Mail: info@chamot-bio.com QQ: 864920491