

CHAMOT

**重组人白细胞介素15 / Recombinant IL-15, Human,
GMP**

CM016-100HPG

CM016-1000HPG



CHAMOT

乔默®生物

Specialize In Cytokines



CONTENT

1 产品简介

2 产品使用

3 产品储存/运输

4 实验数据展示

重组人白细胞介素15 / Recombinant IL-15, Human, GMP

产品编号	CM016-100HPG	CM016-1000HPG
规格	100 ug	1 mg

产品简介

背景描述

Interleukin-15 (IL-15) is a 14-15 kDa glycoprotein with immune regulatory functions in many diverse cell types. IL-15 can be constitutively expressed in a variety of cell types stored as intracellular protein in the cytoplasm as well as transport to the cell surface, while only secreted from some cell types including monocytes, dendritic cells, epithelial cells, bone marrow stromal cells, and fibroblasts. As a pleiotropic cytokine, IL-15 mediates the crosstalk between innate immunity and adaptive immunity whose principal role is to kill virally infected cells. IL-15 plays a crucial role in the development, differentiation, and survival of NK cells. In monocytes, IL-15 induces the production of IL-8 and monocyte chemotactic protein 1 (MCP-1), which recruits neutrophils and monocytes to sites of infection. IL-15 can also act as a chemo-attractant in T lymphocytes and regulate the differentiation of T lymphocytes.

别称

interleukin 15, IL-T, IL15

蛋白编码

P40933

分子量

The protein has a calculated MW of 13.7 kDa. The protein migrates as 13 kDa under reducing condition (SDS-PAGE analysis).

表达系统

Escherichia coli

纯度

>97% as determined by SDS-PAGE analysis.

生物活性

Measure by its ability to induce proliferation in CTLL-2 cells. The ED₅₀ for this effect is < 3 ng/mL. The specific activity of recombinant human IL-15 GMP is > 2 x 10⁶ IU/mg, which is calibrated against the human IL-15 WHO International Standard (NIBSC code: 95/554).

内毒素检测

<0.05 EU per 1 µg of the protein by the LAL method.

蛋白序列

NWVNVISDLKKIEDLIQSMHIDATLYTESDVHPSCKVTAMKCFLLQLQVISLESGDASIHDTVEN LIILANNSLSSNGNVTESGCKECEELEEKNKEFLQSFVHVHIVQMFIN TS with polyhistidine tag at the N-terminus.

支原体

Not detected

产品形式 Lyophilized from a 0.2 μ m filtered solution of NaPi buffer, 0.018% SDS, pH 7.5.

产品应用 Cell Culture

产品使用

Centrifuge at 3000 rpm for 5 mins before opening. It is recommended to reconstitute the lyophilized protein in sterile H₂O to a concentration not less than 0.5 mg/mL and incubate the stock solution at RT for at least 20 min to ensure sufficient re-dissolved. Do Not Vortex! Vigorous shaking may impair the biological activity of the protein.

产品储存/运输

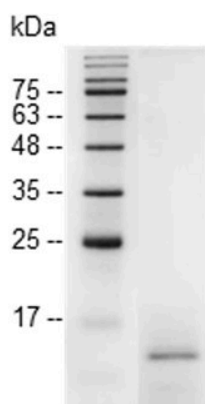
储存

Lyophilized protein should be stored at -20°C for 1 year. Upon reconstitution, store at 2°C to 8°C for up to 1 week. Further dilute in a buffer containing a carrier protein or stabilizer (e.g. 0.1% BSA, 10%FBS, 5%HSA or 5% trehalose solution), protein aliquots should be stored at -20°C or -80°C for 3-6 months. Avoid repeated freeze/thaw cycles.

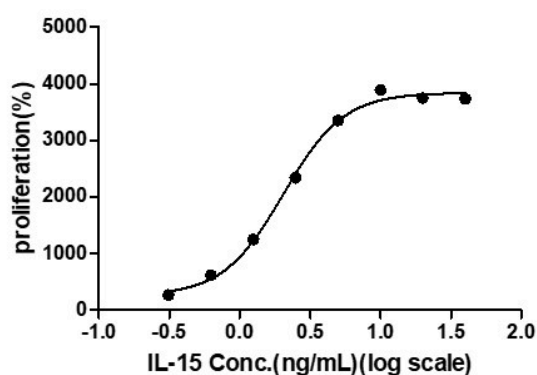
运输

Blue Ice

实验数据展示



SDS- PAGE analysis of GMP human IL-15



GMP Human IL-15 Protein, His Tag, E. coli induces CTLL-2

cell proliferation, with the ED₅₀ <3 ng/mL.

For Research Use or Further Manufacturing Only

Chamot Biotechnology(Shanghai) Co., Ltd. www.chamot-bio.com

Tel: 021-51880030 Mail: info@chamot-bio.com QQ: 864920491