

CHAMOT

**重组猪趋化因子CCL2 /Recombinant CCL2, Swine,
Animal-Free**

CM021-5SP

CM021-20SP

CM021-100SP

CM021-500SP

CM021-1000SP



CHAMOT

乔默®生物

Specialize In Cytokines



CONTENT

1 产品简介

2 产品使用

3 产品储存/运输

4 实验数据展示

重组猪趋化因子CCL2 /Recombinant CCL2, Swine, Animal-Free

产品编号	CM021-5SP	CM021-20SP	CM021-100SP	CM021-500SP	CM021-1000SP
规格	5 µg	20 µg	100 µg	500 µg	1 mg

产品简介

背景描述

CCL2 (Chemokine ligand 2) is also named for the MCP1 (monocyte chemoattractant protein 1) which is a cytokine of CC chemokine family. CCL2 plays an important role in the recruitment of T cell and monocyte during inflammation, which is induced by the infection. CCL2 is secreted from the osteoblasts which is under the mediation of the NF-κB pathway. In cancer therapy, CCL2 plays an important role in increasing the anti-tumor capability of monocytes and neutrophils.

别称

C-C Motif Chemokine Ligand 2, MCP-1

蛋白编码

P42831

分子量

The protein has a calculated MW of 9.42 kDa. The protein migrates as 11-17 kDa under reducing condition (SDS-PAGE analysis).

表达系统

Escherichia coli

纯度

>98% as determined by SDS-PAGE.

生物活性

Testing in process

内毒素检测

<0.1 EU per 1 µg of the protein by the LAL method.

蛋白序列

QPDAINSPVTCCYTLTSKKISMQRRLMSYRRVTSSKCPKEAVIFKTIAGKEICAEPKQKWVQDSIS
HLDKKNQTPKP with polyhistidine tag at the N-terminus.

产品形式

The protein was lyophilized from a 0.2 µm filtered solution containing 1X PBS, pH 7.4. If you have any concerns or special requirements, please confirm with us.

产品应用

Cell Culture

产品使用

1. Before opening, centrifuge at 3000 rpm for 5 mins.

2.Initial Reconstitution

- Reconstitute the Lyophilized Protein in sterile H₂O to a concentration of 100-200 µg/mL.
- Then, incubate it at room temperature for at least 20 mins to ensure sufficient dissolution.

Do Not Vortex! Vigorous shaking may impair the biological activity of the protein.

- Store at 2°C to 8°C for up to 1 week.

3.Extended Storage

- After the initial reconstitution, further dilute the reconstituted protein in a buffer containing a carrier protein or stabilizer (e.g., 0.1% BSA, 10% FBS, 5% HSA, or 5% trehalose solution). The final concentration is not less than 10 µg/ml.
- Prepare aliquots (≥20 µl).
- Store at -20°C or -80°C for 3 to 6 months.

Avoid repeated freeze-thaw cycles.

产品储存/运输

Lyophilized Protein: Store at -20°C for 1 year.

储存

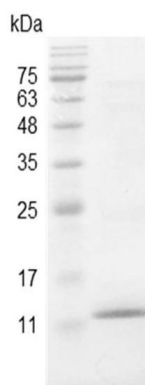
Initial Reconstitution: Store at 2°C to 8°C for up to 1 week.

Extended Storage: Store at -20°C or -80°C for 3 to 6 months with a carrier protein or stabilizer.

运输

Blue Ice

实验数据展示



SDS-PAGE analysis of recombinant swine CCL2

For Research Use or Further Manufacturing Only

Chamot Biotechnology(Shanghai) Co., Ltd. www.chamot-bio.com

Tel: 021-51880030 Mail: info@chamot-bio.com QQ: 864920491