

# CHAMOT

**重组小鼠白细胞介素36 gamma /Recombinant IL-36 gamma, Mouse, Animal-Free**

CM034-5MP

CM034-20MP

CM034-100MP

CM034-500MP

CM034-1000MP



CHAMOT

乔默®生物

*Specialize In Cytokines*



# CONTENT

1 产品简介

2 产品使用

3 产品储存/运输

4 实验数据展示

## 重组小鼠白细胞介素36 gamma /Recombinant IL-36 gamma, Mouse, Animal-Free

产品编号	CM034-5MP	CM034-20MP	CM034-100MP	CM034-500MP	CM034-1000MP
规格	5 µg	20 µg	100 µg	500 µg	1 mg

### 产品简介

#### 背景描述

Interleukin 36 gamma (IL-36 gamma) is a 17.65 kDa cytokine with 159 amino acid residues. IL-36 gamma is a member of the IL-1 family and is mainly expressed in keratinocytes, bronchial epithelial cells, macrophages, and monocyte. This cytokine responds to multiple pathogen-associated molecular patterns (PAMPs) and participates in the inflammatory response. In addition, it also induces the production of pro-inflammatory cytokines like IL-12, IL-1 $\beta$ , IL-6, TNF- $\alpha$ , and IL-23.

#### 别称

interleukin 36 gamma, interleukin 1 family, member 9, IL-1F9, IL36g, IL36

#### 蛋白编码

Q8R460

#### 分子量

The protein has a calculated MW of 18.27 kDa. The protein migrates about 17 kDa under reducing condition (SDS-PAGE analysis).

#### 表达系统

Escherichia coli

#### 纯度

>98% as determined by SDS-PAGE.

#### 生物活性

Measure by its ability to induce IL-6 secretion in 3T3 cells. The ED<sub>50</sub> for this effect is <15 ng/mL. The specific activity of recombinant mouse IL-36 gamma is > 6 x 10<sup>4</sup> IU/mg.

#### 内毒素检测

<0.1 EU per 1 µg of the protein by the LAL method.

#### 蛋白序列

MGRETPDFGEVFDLDQQVWIFRNQALVTVP RSHRVTPSVTILPCKYPESLEQDKGIAIYLG IQ  
NPDKCLFCKEVNGHPTLLLKEEKILDLYHHPEPMKPFLFYHTRTGGTSTFESVAFPGHYIASSKTG  
NPILFTSKKGEYYNINFNLDIKS with polyhistidine tag at the C-terminus.

#### 产品形式

The protein was lyophilized from a 0.2 µm filtered solution containing 50 mM Tris, 150 mM NaCl, pH 8.5. If you have any concerns or special requirements, please confirm with us.

#### 产品应用

Cell Culture

## 产品使用

1. Before opening, centrifuge at 3000 rpm for 5 mins.

### 2.Initial Reconstitution

- Reconstitute the Lyophilized Protein in sterile H<sub>2</sub>O to a concentration of 100-200 µg/mL.
- Then, incubate it at room temperature for at least 20 mins to ensure sufficient dissolution.

Do Not Vortex! Vigorous shaking may impair the biological activity of the protein.

- Store at 2°C to 8°C for up to 1 week.

### 3.Extended Storage

- After the initial reconstitution, further dilute the reconstituted protein in a buffer containing a carrier protein or stabilizer (e.g., 0.1% BSA, 10% FBS, 5% HSA, or 5% trehalose solution). The final concentration is not less than 10 µg/ml.

- Prepare aliquots (≥20 µl).
- Store at -20°C or -80°C for 3 to 6 months.

Avoid repeated freeze-thaw cycles.

## 产品储存/运输

**Lyophilized Protein:** Store at -20°C for 1 year.

### 储存

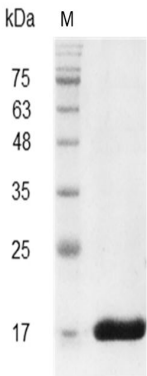
**Initial Reconstitution:** Store at 2°C to 8°C for up to 1 week.

**Extended Storage:** Store at -20°C or -80°C for 3 to 6 months with a carrier protein or stabilizer.

### 运输

Blue Ice

## 实验数据展示



For Research Use or Further Manufacturing Only

Chamot Biotechnology(Shanghai) Co., Ltd. [www.chamot-bio.com](http://www.chamot-bio.com)

Tel: 021-51880030 Mail: [info@chamot-bio.com](mailto:info@chamot-bio.com) QQ: 864920491