

CHAMOT

**重组小鼠白血病抑制因子 /Recombinant LIF, Mouse,
Animal-Free**

CM066-5MP

CM066-20MP

CM066-100MP

CM066-500MP

CM066-1000MP



CHAMOT

乔默®生物

Specialize In Cytokines



CONTENT

1 产品简介

2 产品使用

3 产品储存/运输

4 实验数据展示

重组小鼠白血病抑制因子 /Recombinant LIF, Mouse, Animal-Free

| 产品编号 | CM066-5MP | CM066-20MP | CM066-100MP | CM066-500MP | CM066-1000MP |
|------|-----------|------------|-------------|-------------|--------------|
| 规格 | 5 µg | 20 µg | 100 µg | 500 µg | 1 mg |

产品简介

背景描述

Leukemia inhibitory factor (LIF) is a pleiotropic glycoprotein, belonging to the IL-6 receptor family. Mouse LIF shares 79% sequence homology with human LIF. LIF is a 19.7 kDa protein containing 202 amino acid which high expression in human liver, bone, uterus, kidney and the central nervous system. LIF is a inducer of differentiation in M1 leukaemia cells, osteoblasts and glia. Not only stimulates proliferation of DA1 cells inhibit proliferation of corticotrophs and promote cell survival in some cell types but also induces apoptosis in others.

别称

leukemia inhibitory factor, Differentiation-stimulating factor, D factor, Melanoma-derived LPL inhibitor (MLPLI), Interleukin 6 family cytokine

蛋白编码

P09056

分子量

The protein has a calculated MW of 20.68 kDa. The protein migrates as 17-25 kDa under reducing condition (SDS-PAGE analysis).

表达系统

Escherichia coli

纯度

>95% as determined by SDS-PAGE.

生物活性

Measure by its ability to induce IL-6 secretion in M1 cells. The ED₅₀ for this effect is <0.5 ng/mL. The specific activity of recombinant mouse LIF is > 2 x 10⁶ IU/mg.

内毒素检测

<0.1 EU per 1 µg of the protein by the LAL method.

蛋白序列

SPLPITPVNATCAIRHPCHGNLMNQIKNQLAQLNGSANALFISYYTAQGEPFPNNVEKLCAPN MTDFPSFHGNGTEKTKLVELYRMVAYLSASLTNITRDQKVLNPTAVSLQVKLNATIDVMRGLLS NVLCRLCNKYRVGHVDVPPVPDHSDKEAFQRKKLG CQLLGTYKQVISVVVQAF with polyhistidine tag at the N-terminus.

产品形式

The protein was lyophilized from a 0.2 µm filtered solution containing 1X PBS, pH 7.4. If you have any concerns or special requirements, please confirm with us.

产品使用

1. Before opening, centrifuge at 3000 rpm for 5 mins.

2.Initial Reconstitution

- Reconstitute the Lyophilized Protein in sterile H₂O to a concentration of 100-200 µg/mL.
- Then, incubate it at room temperature for at least 20 mins to ensure sufficient dissolution.

Do Not Vortex! Vigorous shaking may impair the biological activity of the protein.

- Store at 2°C to 8°C for up to 1 week.

3.Extended Storage

- After the initial reconstitution, further dilute the reconstituted protein in a buffer containing a carrier protein or stabilizer (e.g., 0.1% BSA, 10% FBS, 5% HSA, or 5% trehalose solution). The final concentration is not less than 10 µg/ml.

- Prepare aliquots (≥20 µl).
- Store at -20°C or -80°C for 3 to 6 months.

Avoid repeated freeze-thaw cycles.

产品储存/运输

Lyophilized Protein: Store at -20°C for 1 year.

储存

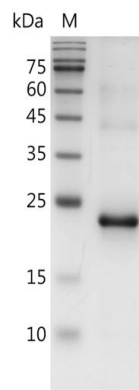
Initial Reconstitution: Store at 2°C to 8°C for up to 1 week.

Extended Storage: Store at -20°C or -80°C for 3 to 6 months with a carrier protein or stabilizer.

运输

Blue Ice

实验数据展示



SDS-PAGE analysis of recombinant mouse LIF

For Research Use or Further Manufacturing Only

Chamot Biotechnology(Shanghai) Co., Ltd. www.chamot-bio.com

Tel: 021-51880030 Mail: info@chamot-bio.com QQ: 864920491