

# CHAMOT

**重组小鼠趋化因子CCL2 /Recombinant CCL2,  
Mouse, Animal-Free**

CM072-5MP

CM072-20MP

CM072-100MP

CM072-500MP

CM072-1000MP



CHAMOT

乔默®生物

*Specialize In Cytokines*



# CONTENT

1 产品简介

2 产品使用

3 产品储存/运输

4 实验数据展示

5 文献引用

## 重组小鼠趋化因子CCL2 /Recombinant CCL2, Mouse, Animal-Free

产品编号	CM072-5MP	CM072-20MP	CM072-100MP	CM072-500MP	CM072-1000MP
规格	5 µg	20 µg	100 µg	500 µg	1 mg

### 产品简介

#### 背景描述

C-C Motif Chemokine Ligand 2 (CCL2) is a 13.88 kDa cytokine with 125 amino acid residues and is also known as monocyte chemoattractant protein 1 (MCP1). CCL2 is mainly secreted from monocytes, macrophages, and dendritic cells. It regulates many biological functions, such as recruitments of monocytes, memory T cells, eosinophils, and dendritic cells, extravasation of helper T cells, response to TNF $\alpha$  and IFN $\gamma$ , and angiogenesis. In addition, upon binding with CCR4, it initiates leukocyte migration response to inflammation.

#### 别称

C-C motif chemokine ligand 2, Monocyte Chemotactic Protein-1, MCP-1, JE

#### 蛋白编码

P10148

#### 分子量

The protein has a calculated MW of 14.65 kDa. The protein migrates as 17-25 kDa under reducing condition (SDS-PAGE analysis).

#### 表达系统

Escherichia coli

#### 纯度

>98% as determined by SDS-PAGE.

#### 生物活性

Measure by its ability to chemoattract THP-1 cells using a concentration range of 10-100 ng/mL.

#### 内毒素检测

<0.1 EU per 1 µg of the protein by the LAL method.

#### 蛋白序列

QPDVAVNAPLTCCYSFTSKMIPMSRLESYKRITSSRCPEAVVFVTKLKREVCADPKKEWVQTYIK  
NLDRNQMRSEPTTLFKTASALRSSAPLNVLKTRKSEANASTTFSTTSSTSVGVTSVTVN with  
polyhistidine tag at the N-terminus.

#### 产品形式

The protein was lyophilized from a 0.2 µm filtered solution containing 1X PBS, pH 7.4. If you have any concerns or special requirements, please confirm with us.

#### 产品应用

Cell Culture

产品使用

1. Before opening, centrifuge at 3000 rpm for 5 mins.

2.Initial Reconstitution

- Reconstitute the Lyophilized Protein in sterile H<sub>2</sub>O to a concentration of 100-200 µg/mL.
- Then, incubate it at room temperature for at least 20 mins to ensure sufficient dissolution.  
Do Not Vortex! Vigorous shaking may impair the biological activity of the protein.
- Store at 2°C to 8°C for up to 1 week.

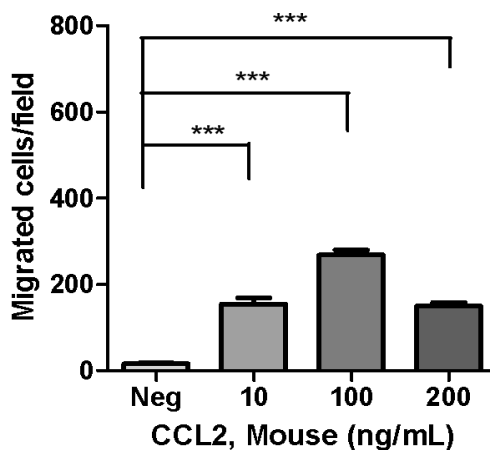
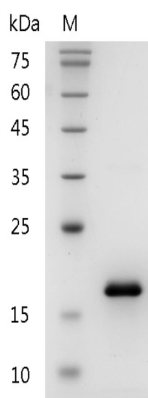
3.Extended Storage

- After the initial reconstitution, further dilute the reconstituted protein in a buffer containing a carrier protein or stabilizer (e.g., 0.1% BSA, 10% FBS, 5% HSA, or 5% trehalose solution). The final concentration is not less than 10 µg/ml.
- Prepare aliquots (≥20 µl).
- Store at -20°C or -80°C for 3 to 6 months.  
Avoid repeated freeze-thaw cycles.

产品储存/运输

储存	<b>Lyophilized Protein:</b> Store at -20°C for 1 year.
	<b>Initial Reconstitution:</b> Store at 2°C to 8°C for up to 1 week.
	<b>Extended Storage:</b> Store at -20°C or -80°C for 3 to 6 months with a carrier protein or stabilizer.
运输	Blue Ice

实验数据展示



Activity analysis of recombinant mouse CCL2, His Tag, E. coli.

SDS-PAGE analysis of recombinant mouse CCL2

Measure by its ability to chemoattract human THP1 cells using a concentration range of 10-100 ng/mL.

## 文献引用

- M2 macrophages with inflammation tropism facilitate cementoblast mineralization. J Periodontol. 2022 Aug 1. (IF 6.993)(Mouse CCL2)
- Dual-Engineered Macrophage-Microbe Encapsulation for Metastasis Immunotherapy. Adv Mater. 2024 Jul 18:e2406140. (IF 27.4)(Mouse CCL2)

For Research Use or Further Manufacturing Only

Chamot Biotechnology(Shanghai) Co., Ltd. [www.chamot-bio.com](http://www.chamot-bio.com)

Tel: 021-51880030 Mail: [info@chamot-bio.com](mailto:info@chamot-bio.com) QQ: 864920491