

# CHAMOT

**重组人纤毛神经营养因子 /Recombinant CNTF,  
Human, Animal-Free**

**CM137-5HP**

**CM137-20HP**

**CM137-100HP**

**CM137-500HP**

**CM137-1000HP**



**CHAMOT**

乔默®生物

*Specialize In Cytokines*

# CONTENT

1 产品简介

2 产品使用

3 产品储存/运输

4 实验数据展示

## 重组人纤毛神经营养因子 /Recombinant CNTF, Human, Animal-Free

产品编号	CM137-5HP	CM137-20HP	CM137-100HP	CM137-500HP	CM137-1000HP
规格	5 µg	20 µg	100 µg	500 µg	1 mg

### 产品简介

#### 背景描述

Ciliary neurotrophic factor (CNTF) is the member of IL-6 cytokine family and expressed in the nervous system. CNTF is 22.9 kDa neurotrophic factor containing 200 residues, which shows multiple effects in vertebrate retinogenesis. Besides, CNTF acts as a promoter that not only accelerates adult neurogenesis but also increases the survival of neuron after injury. On the other hands, reducing number of hippocampal GABAergic interneurons, as well as 5-HT levels and 5-HT1A receptor expression has been found in CNTF knockout female mice, indicating that CNTF may influence affective behavior in females by regulation of neurotransmission.

#### 别称

ciliary neurotrophic factor, HCNTF

#### 蛋白编码

P26441

#### 分子量

The protein has a calculated MW of 23.74 kDa. The protein migrates as 25 kDa under reducing condition (SDS-PAGE analysis).

#### 表达系统

Escherichia coli

#### 纯度

>98% as determined by SDS-PAGE.

#### 生物活性

Measure by its ability to induce proliferation in TF-1 cells. The ED<sub>50</sub> for this effect is <0.15 µg/mL.

#### 内毒素检测

<0.1 EU per 1 µg of the protein by the LAL method.

#### 蛋白序列

MAFTEHSPLTPHRRDLCRSIWLARKIRSDLTALTESYVKHQGLNKNINLDSADGMPVASTDQ  
WSELTEAERLQENLQAYRTFHVLLARLLEDQQVHFTPTGDFHQAIHTLLLQVAAFAYQIEELMI  
LLEYKIPRNEADGMPINVGDGGLFEKKLWGLKVLQELSQWTVRSIHDLRFISSHQTGIPARGSH  
YIANNKKM with polyhistidine tag at the C-terminus

#### 产品形式

The protein was lyophilized from a 0.2 µm filtered solution containing 1X PBS, pH 7.4. If you have any concerns or special requirements, please confirm with us.

#### 产品应用

Cell Culture

## 产品使用

1. Before opening, centrifuge at 3000 rpm for 5 mins.

### 2.Initial Reconstitution

- Reconstitute the Lyophilized Protein in sterile H<sub>2</sub>O to a concentration of 100-200 µg/mL.
- Then, incubate it at room temperature for at least 20 mins to ensure sufficient dissolution.

Do Not Vortex! Vigorous shaking may impair the biological activity of the protein.

- Store at 2°C to 8°C for up to 1 week.

### 3.Extended Storage

• After the initial reconstitution, further dilute the reconstituted protein in a buffer containing a carrier protein or stabilizer (e.g., 0.1% BSA, 10% FBS, 5% HSA, or 5% trehalose solution). The final concentration is not less than 10 µg/ml.

- Prepare aliquots (≥20 µl).
- Store at -20°C or -80°C for 3 to 6 months.

Avoid repeated freeze-thaw cycles.

## 产品储存/运输

**Lyophilized Protein:** Store at -20°C for 1 year.

### 储存

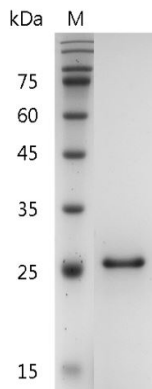
**Initial Reconstitution:** Store at 2°C to 8°C for up to 1 week.

**Extended Storage:** Store at -20°C or -80°C for 3 to 6 months with a carrier protein or stabilizer.

### 运输

Blue Ice

## 实验数据展示



For Research Use or Further Manufacturing Only

Chamot Biotechnology(Shanghai) Co., Ltd. [www.chamot-bio.com](http://www.chamot-bio.com)

Tel: 021-51880030 Mail: [info@chamot-bio.com](mailto:info@chamot-bio.com) QQ: 864920491