

# CHAMOT

**重组人CD326 /Recombinant CD326, Human,  
Animal-Free**

CM145-5HP

CM145-20HP

CM145-100HP

CM145-500HP

CM145-1000HP



CHAMOT

乔默®生物

*Specialize In Cytokines*

# CONTENT

1 产品简介

2 产品使用

3 产品储存/运输

4 实验数据展示

## 重组人CD326 /Recombinant CD326, Human, Animal-Free

产品编号	CM145-5HP	CM145-20HP	CM145-100HP	CM145-500HP	CM145-1000HP
规格	5 µg	20 µg	100 µg	500 µg	1 mg

### 产品简介

背景描述	Human CD326 also called epithelial cellular adhesion molecule (EpCAM), which is a 28 kDa protein containing 242 amino acid residues. Human CD326 is a transmembrane glycoprotein, which is a marker of cancer. CD326 induces the expression of c-myc, cyclins A & E and e-fabp which is involved the cancer cell proliferation and migration.
别称	EPCAM, DIAR5, EGP-2, EGP314, EGP40, ESA, HNPCC8, KS1/4, KSA, M4S1, MIC18, MK-1, TACSTD1, TROP1
蛋白编码	P16422
分子量	The protein has a calculated MW of 28.36 kDa. The protein migrates as 30 kDa under reducing condition (SDS-PAGE analysis).
表达系统	Escherichia coli
纯度	>95% as determined by SDS-PAGE.
生物活性	Measure by the ability of the immobilized protein to support the adhesion of the 3T3 cells. The ED <sub>50</sub> for this effect is 0.2-1.7 ng/mL.
内毒素检测	<0.1 EU per 1 µg of the protein by the LAL method.
蛋白序列	MQEECVCENYKLAVNCFVNNNRQCQCTSVGAQNTVICSKLAAKCLVMKAEMNGSKLGRRRA KPEGALQNNDGLYDPDCDESGLFKAKQCNGTSMCWCVNTAGVRRTDKDTEITCSERVRTYW IIIELKHKAREKPYDSKSLRTALQKEITTRYQLDPKFITSILYENNVITIDLVQNSSQKTQNDVDIAD VAYYFEKDVKGESLFHSSKMDLTVNGEQLDLPQGTLIYYVDEKAPEFSMQGLK with polyhistidine tag at the C-terminus.
产品形式	The protein was lyophilized from a 0.2 µm filtered solution containing 1X PBS, pH 8.0. If you have any concerns or special requirements, please confirm with us.
产品应用	Cell Culture

## 产品使用

1. Before opening, centrifuge at 3000 rpm for 5 mins.

### 2.Initial Reconstitution

- Reconstitute the Lyophilized Protein in sterile H<sub>2</sub>O to a concentration of 100-200 µg/mL.
- Then, incubate it at room temperature for at least 20 mins to ensure sufficient dissolution.

Do Not Vortex! Vigorous shaking may impair the biological activity of the protein.

- Store at 2°C to 8°C for up to 1 week.

### 3.Extended Storage

- After the initial reconstitution, further dilute the reconstituted protein in a buffer containing a carrier protein or stabilizer (e.g., 0.1% BSA, 10% FBS, 5% HSA, or 5% trehalose solution). The final concentration is not less than 10 µg/ml.

- Prepare aliquots (≥20 µl).
- Store at -20°C or -80°C for 3 to 6 months.

Avoid repeated freeze-thaw cycles.

## 产品储存/运输

**Lyophilized Protein:** Store at -20°C for 1 year.

### 储存

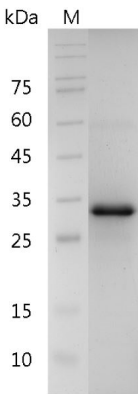
**Initial Reconstitution:** Store at 2°C to 8°C for up to 1 week.

**Extended Storage:** Store at -20°C or -80°C for 3 to 6 months with a carrier protein or stabilizer.

### 运输

Blue Ice

## 实验数据展示



For Research Use or Further Manufacturing Only

Chamot Biotechnology(Shanghai) Co., Ltd. [www.chamot-bio.com](http://www.chamot-bio.com)

Tel: 021-51880030 Mail: [info@chamot-bio.com](mailto:info@chamot-bio.com) QQ: 864920491