

CHAMOT

**重组人壳多糖酶3样蛋白 1 /Recombinant CHI3L1,
Human, Animal-Free**

CM147-5HP

CM147-20HP

CM147-100HP

CM147-500HP

CM147-1000HP



CHAMOT

乔默®生物

Specialize In Cytokines



CONTENT

1 产品简介

2 产品使用

3 产品储存/运输

4 实验数据展示

重组人壳多糖酶3样蛋白 1 /Recombinant CHI3L1, Human, Animal-Free

产品编号	CM147-5HP	CM147-20HP	CM147-100HP	CM147-500HP	CM147-1000HP
规格	5 µg	20 µg	100 µg	500 µg	1 mg

产品简介

背景描述 Chitinases and non-enzymatic chitinase-like proteins (CLPs, can bind chitin but cannot digest) belong to Glycoside hydrolase family 18. Human CHI3L1, YKL-40, is a CLP and a 42 kDa protein with 383 amino acid residues. The complex (CHI3L1, IL-13R alpha2 and IL-13) regulate downstream signal transduction pathway related to inflammation, proliferation and metastasis.

别称 chitinase-3-like protein 1, ASRT7, CGP-39, GP-39, GP39, HC-gp39, HCGP-3P, YK-40, YKL-40, YKL40, YYL-40, hCGP-39

蛋白编码 P36222

分子量 The protein has a calculated MW of 41.43 kDa. The protein migrates as 40 kDa under reducing condition (SDS-PAGE analysis).

表达系统 Escherichia coli

纯度 >98% as determined by SDS-PAGE.

生物活性 Testing in process

内毒素检测 <0.1 EU per 1 µg of the protein by the LAL method.

蛋白序列 MYKLVCYYTSWSQYREGDGSCFPDALDRFLCTHIIYSFANISNDHIDTWEWNDVTLYGMLNTL KNRNPNLKTLLSVGGWNFGSQRFKSIASNTQSRRTFIKSVPPFLRTHGFDGLDLAWLYPGRRD KQHFTTLIKEMKAEFIKEAQPGKKQLLLSAALSAGKVTIDSSYDIAKISQHLDFISIMTYDFHGA WRGTTGHHSPFRGQEDASPD RFNSNTDYAVGYMLRLGAPASKLVMGIPTFGRSFTLASSETGV GAPISGPGIPGRFTKEAGTLAYYEICDFLRGATVHRILGQQVPYATKGNQWVGYYDDQESVKSK VQYLKDRQLAGAMVWALDLDLDFQGSFCGQDLRFPLTNAIKDALAAT with polyhistidine tag at the C-terminus.

产品形式 The protein was lyophilized from a 0.2 µm filtered solution containing 1X PBS, pH 7.4. If you have any concerns or special requirements, please confirm with us.

产品应用 Cell Culture

产品使用

1. Before opening, centrifuge at 3000 rpm for 5 mins.

2.Initial Reconstitution

- Reconstitute the Lyophilized Protein in sterile H₂O to a concentration of 100-200 µg/mL.
- Then, incubate it at room temperature for at least 20 mins to ensure sufficient dissolution.

Do Not Vortex! Vigorous shaking may impair the biological activity of the protein.

- Store at 2°C to 8°C for up to 1 week.

3.Extended Storage

- After the initial reconstitution, further dilute the reconstituted protein in a buffer containing a carrier protein or stabilizer (e.g., 0.1% BSA, 10% FBS, 5% HSA, or 5% trehalose solution). The final concentration is not less than 10 µg/ml.

- Prepare aliquots (≥20 µl).
- Store at -20°C or -80°C for 3 to 6 months.

Avoid repeated freeze-thaw cycles.

产品储存/运输

Lyophilized Protein: Store at -20°C for 1 year.

储存

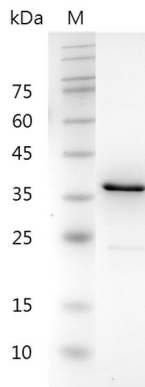
Initial Reconstitution: Store at 2°C to 8°C for up to 1 week.

Extended Storage: Store at -20°C or -80°C for 3 to 6 months with a carrier protein or stabilizer.

运输

Blue Ice

实验数据展示



For Research Use or Further Manufacturing Only

Chamot Biotechnology(Shanghai) Co., Ltd. www.chamot-bio.com

Tel: 021-51880030 Mail: info@chamot-bio.com QQ: 864920491