

# CHAMOT

**重组人半乳糖凝集素-8 /Recombinant Galectin-8,  
Human, Animal-Free**

CM153-5HP

CM153-20HP

CM153-100HP

CM153-500HP

CM153-1000HP



CHAMOT

乔默®生物

*Specialize In Cytokines*



# CONTENT

1 产品简介

2 产品使用

3 产品储存/运输

4 实验数据展示

## 重组人半乳糖凝集素-8 /Recombinant Galectin-8, Human, Animal-Free

产品编号	CM153-5HP	CM153-20HP	CM153-100HP	CM153-500HP	CM153-1000HP
规格	5 µg	20 µg	100 µg	500 µg	1 mg

### 产品简介

#### 背景描述

Galectin-8 (Gal-8) is a lectin family member and is one of the tandem repeat-type galectins containing two carbohydrate recognition domains (CRD) connected by a linker region in a single peptide chain. The CRD is responsible for  $\beta$ -galactoside binding, and the binding partners for galectin-8 have been identified, including CD44 and a subset of integrins. Galectin-8 and integrins form complexes, subsequently leading to phosphorylation of paxillin and focal adhesion kinase (FAK), which activates signal pathways including MAPK-ERK and PI3K-AKT pathways. Galectin-8 is constitutively presented in the Liver, kidney, cardiac muscle, lung, and brain. Galectin-8 serves as an immunosuppressive protective role against autoimmune CNS inflammation, regulating the balance of Th17 and Th1 polarization.

#### 别称

LGALS8, Gal-8, PCTA-1, PCTA1, Po66-CBP

#### 蛋白编码

O00214

#### 分子量

The protein has a calculated MW of 36.6 kDa. The protein migrates as 34 kDa under reducing condition (SDS-PAGE analysis).

#### 表达系统

Escherichia coli

#### 纯度

>98% as determined by SDS-PAGE.

#### 生物活性

Measure by its ability to chemoattract human THP1 cells. Chemotactic activity was observed at a concentration of 25 µg/mL.

#### 内毒素检测

<0.1 EU per 1 µg of the protein by the LAL method.

#### 蛋白序列

MLSLNNLQNIYNPVIPIFVGITPDQLDPGTLIVIRGHVPSDADRQVDLQNGSSMKPRADVAF  
HFNPRFKRAGCIVCNTLINEKWGREEITYDTPFKREKSFEIVIMVLKDKFQVAVNGKHTLLYGHR  
IGPEKIDTLGIYGKVNHSIGFSFSSDLQSTQASSLELTEISRENVPKSGTPQLRLPFAARLNTPMG  
PGRTVVVKGEVNANAKSFNVDLLAGKSKDIALHLNPRLNIAFVRNSFLQESWGEEERNITSFP  
FSPGMYFEMIIYCDVREFKVAVNGVHSLEYKHRFKELSSIDTLEINGDIHLLEVRWS with  
polyhistidine tag at the N-terminus.

#### 产品形式

The protein was lyophilized from a 0.2  $\mu\text{m}$  filtered solution containing 1X PBS, pH 7.4. If you have any concerns or special requirements, please confirm with us.

#### 产品应用

Cell Culture

### 产品使用

1. Before opening, centrifuge at 3000 rpm for 5 mins.

#### 2.Initial Reconstitution

- Reconstitute the Lyophilized Protein in sterile  $\text{H}_2\text{O}$  to a concentration of 100-200  $\mu\text{g}/\text{mL}$ .
- Then, incubate it at room temperature for at least 20 mins to ensure sufficient dissolution.

**Do Not Vortex! Vigorous shaking may impair the biological activity of the protein.**

- Store at 2°C to 8°C for up to 1 week.

#### 3.Extended Storage

- After the initial reconstitution, further dilute the reconstituted protein in a buffer containing a carrier protein or stabilizer (e.g., 0.1% BSA, 10% FBS, 5% HSA, or 5% trehalose solution). The final concentration is not less than 10  $\mu\text{g}/\text{mL}$ .

- Prepare aliquots ( $\geq 20 \mu\text{l}$ ).
- Store at -20°C or -80°C for 3 to 6 months.

**Avoid repeated freeze-thaw cycles.**

### 产品储存/运输

#### 储存

**Lyophilized Protein:** Store at -20°C for 1 year.

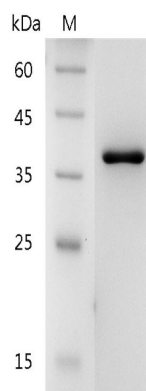
**Initial Reconstitution:** Store at 2°C to 8°C for up to 1 week.

**Extended Storage:** Store at -20°C or -80°C for 3 to 6 months with a carrier protein or stabilizer.

#### 运输

Blue Ice

### 实验数据展示



SDS-PAGE analysis of recombinant human Galectin-8

For Research Use or Further Manufacturing Only

Chamot Biotechnology(Shanghai) Co., Ltd. [www.chamot-bio.com](http://www.chamot-bio.com)

Tel: 021-51880030 Mail: [info@chamot-bio.com](mailto:info@chamot-bio.com) QQ: 864920491