

# CHAMOT

**重组人趋化因子CXCL1 /Recombinant CXCL1,  
Human, Animal-Free**

CM161-5HP

CM161-20HP

CM161-100HP

CM161-500HP

CM161-1000HP



CHAMOT

乔默®生物

*Specialize In Cytokines*

# CONTENT

1 产品简介

2 产品使用

3 产品储存/运输

4 实验数据展示

## 重组人趋化因子CXCL1 /Recombinant CXCL1, Human, Animal-Free

产品编号	CM161-5HP	CM161-20HP	CM161-100HP	CM161-500HP	CM161-1000HP
规格	5 µg	20 µg	100 µg	500 µg	1 mg

### 产品简介

#### 背景描述

C-X-C motif chemokine 1 (CXCL1) also named Growth-regulated oncogene alpha (GRO $\alpha$ ), which is a chemokine of the intercrine alpha family. CXCL1 is a 7.9 kDa protein containing 73 amino acid residues. CXCL1 is expressed in immune cells such as macrophage and neutrophils. CXCL1 plays an important role with immune responses and cancer progression. CXCL1 activates the cell signal transduction with casepas1 that affect the cell proliferation, differentiation and migration.

#### 别称

C-X-C motif chemokine 1, GRO- $\alpha$ : MGSA $\alpha$ , NAP-3, GRO1

#### 蛋白编码

P09341

#### 分子量

The protein has a calculated MW of 8.67 kDa. The protein migrates as 10 kDa under reducing condition (SDS-PAGE analysis).

#### 表达系统

Escherichia coli

#### 纯度

>98% as determined by SDS-PAGE.

#### 生物活性

Measure by its ability to chemoattract human THP1 cells using a concentration range of 10-100 ng/mL.

#### 内毒素检测

<0.1 EU per 1 µg of the protein by the LAL method.

#### 蛋白序列

ASVATELRCQCLQTLQGIHPKNIQSVNVKSPGPHCAQTEVIATLKNGRKACLNPASPIVKKII EK MLNSDKSN with polyhistidine tag at the N-terminus.

#### 产品形式

The protein was lyophilized from a 0.2 µm filtered solution containing 1X PBS, pH 7.4. If you have any concerns or special requirements, please confirm with us.

#### 产品应用

Cell Culture

### 产品使用

1. Before opening, centrifuge at 3000 rpm for 5 mins.

## 2.Initial Reconstitution

- Reconstitute the Lyophilized Protein in sterile H<sub>2</sub>O to a concentration of 100-200 µg/mL.
- Then, incubate it at room temperature for at least 20 mins to ensure sufficient dissolution.

*Do Not Vortex! Vigorous shaking may impair the biological activity of the protein.*

- Store at 2°C to 8°C for up to 1 week.

## 3.Extended Storage

- After the initial reconstitution, further dilute the reconstituted protein in a buffer containing a carrier protein or stabilizer (e.g., 0.1% BSA, 10% FBS, 5% HSA, or 5% trehalose solution). The final concentration is not less than 10 µg/ml.
- Prepare aliquots (≥20 µl).
- Store at -20°C or -80°C for 3 to 6 months.

*Avoid repeated freeze-thaw cycles.*

## 产品储存/运输

**Lyophilized Protein:** Store at -20°C for 1 year.

### 储存

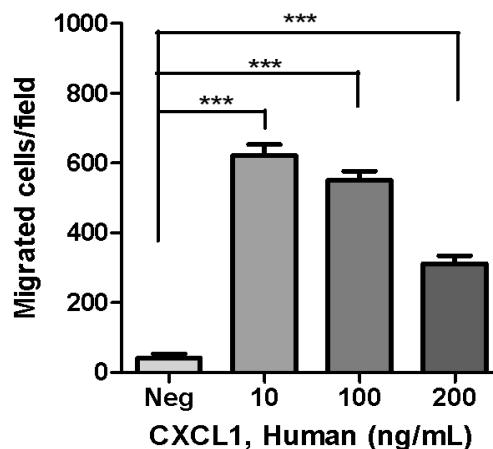
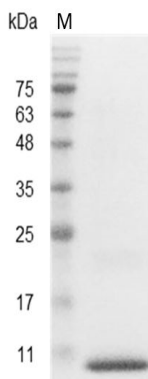
**Initial Reconstitution:** Store at 2°C to 8°C for up to 1 week.

**Extended Storage:** Store at -20°C or -80°C for 3 to 6 months with a carrier protein or stabilizer.

### 运输

Blue Ice

## 实验数据展示



Activity analysis of recombinant human CXCL1, His Tag, E. coli.

SDS-PAGE analysis of recombinant human CXCL1      Measure by its ability to chemoattract human THP1 cells using a  
concentration range of 10-100 ng/mL.

For Research Use or Further Manufacturing Only

Chamot Biotechnology(Shanghai) Co., Ltd. [www.chamot-bio.com](http://www.chamot-bio.com)

Tel: 021-51880030      Mail: [info@chamot-bio.com](mailto:info@chamot-bio.com)      QQ: 864920491