

CHAMOT

**重组人趋化因子CXCL13 /Recombinant CXCL13,
Human, Animal-Free**

CM167-5HP

CM167-20HP

CM167-100HP

CM167-500HP

CM167-1000HP



CHAMOT

乔默®生物

Specialize In Cytokines

CONTENT

1 产品简介

2 产品使用

3 产品储存/运输

4 实验数据展示

重组人趋化因子CXCL13 /Recombinant CXCL13, Human, Animal-Free

| | | | | | |
|------|-----------|------------|-------------|-------------|--------------|
| 产品编号 | CM167-5HP | CM167-20HP | CM167-100HP | CM167-500HP | CM167-1000HP |
| 规格 | 5 µg | 20 µg | 100 µg | 500 µg | 1 mg |

产品简介

背景描述

C-X-C motif chemokine 13 (CXCL13) also named B lymphocyte chemoattractant (BLC), which is a chemokine of the intercrine alpha family. CXCL13 is a 7.9kDa protein containing 72 amino acid residues. CXCL13 is a chemotaxis for B lymphocyte. CXCL13 induces the cell proliferation through the AKT signal pathway which plays a key role in intestinal cancer model. CXCL13 /CXCR5 axis is highly expressed in gut, spleen and lymph nodes.

别称

C-X-C motif chemokine 13, B-cell Attracting Chemokine-1, BLR1 Ligand, BCA-1/BLC

蛋白编码

O43927

分子量

The protein has a calculated MW of 9.49 kDa. The protein migrates as 11 kDa under reducing condition (SDS-PAGE analysis).

表达系统

Escherichia coli

纯度

>98% as determined by SDS-PAGE.

生物活性

Measure by its ability to chemoattract human THP1 cells using a concentration range of 10-100 ng/mL.

内毒素检测

<0.1 EU per 1 µg of the protein by the LAL method.

蛋白序列

VLEVYYTSLRCRCVQESSVFIPRRFIDRIQILPRGNGCPRKEIIVWKKNKSIVCVDPQAEWIQRM MEVLRKR with polyhistidine tag at the N-terminus.

产品形式

The protein was lyophilized from a 0.2 µm filtered solution containing 1X PBS, pH 7.4. If you have any concerns or special requirements, please confirm with us.

产品应用

Cell Culture

产品使用

1. Before opening, centrifuge at 3000 rpm for 5 mins.

2.Initial Reconstitution

- Reconstitute the Lyophilized Protein in sterile H₂O to a concentration of 100-200 µg/mL.
- Then, incubate it at room temperature for at least 20 mins to ensure sufficient dissolution.

Do Not Vortex! Vigorous shaking may impair the biological activity of the protein.

- Store at 2°C to 8°C for up to 1 week.

3.Extended Storage

- After the initial reconstitution, further dilute the reconstituted protein in a buffer containing a carrier protein or stabilizer (e.g., 0.1% BSA, 10% FBS, 5% HSA, or 5% trehalose solution). The final concentration is not less than 10 µg/ml.
- Prepare aliquots (≥20 µl).
- Store at -20°C or -80°C for 3 to 6 months.

Avoid repeated freeze-thaw cycles.

产品储存/运输

Lyophilized Protein: Store at -20°C for 1 year.

储存

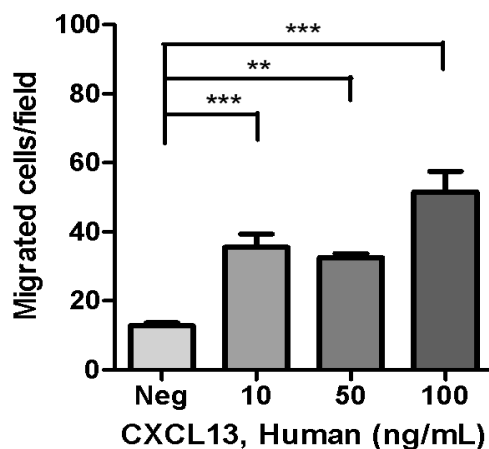
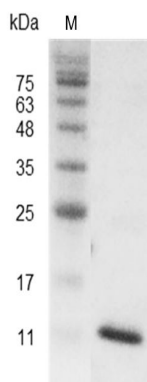
Initial Reconstitution: Store at 2°C to 8°C for up to 1 week.

Extended Storage: Store at -20°C or -80°C for 3 to 6 months with a carrier protein or stabilizer.

运输

Blue Ice

实验数据展示



SDS-PAGE analysis of recombinant human
CXCL13

Activity analysis of recombinant Human CXCL13, His Tag, E. coli.
Measure by its ability to chemoattract human THP1 cells using a
concentration range of 10-100 ng/mL.

For Research Use or Further Manufacturing Only

Chamot Biotechnology(Shanghai) Co., Ltd. www.chamot-bio.com

Tel: 021-51880030 Mail: info@chamot-bio.com QQ: 864920491