

CHAMOT

重组人CD28 /Recombinant CD28 ECD, Human

CM184-5HP

CM184-20HP

CM184-100HP

CM184-500HP

CM184-1000HP



CHAMOT

乔默®生物

Specialize In Cytokines



CONTENT

1 产品简介

2 产品使用

3 产品储存/运输

4 实验数据展示

重组人CD28 /Recombinant CD28 ECD, Human

产品编号	CM184-5HP	CM184-20HP	CM184-100HP	CM184-500HP	CM184-1000HP
规格	5 µg	20 µg	100 µg	500 µg	1 mg

产品简介

背景描述 CD28, a well-known costimulatory receptor expressed on T cells, is a type I transmembrane glycoprotein of the Ig superfamily. When the T cells receive the first signal delivered by APCs (antigen-presenting cells), it initiates signaling cascades, which favor T cell survival and proliferation. It has been demonstrated that patients with lung cancer who responded to PD-1 therapy had more CD28+ T cells, suggesting that CD28 may predict treatment response.

别称 TP44

蛋白编码 P10747

分子量 The protein has a calculated MW of 28.61 kDa. The protein migrates as 48-62 kDa under reducing condition (SDS-PAGE analysis).

表达系统 HEK293

纯度 >95% as determined by SDS-PAGE.

生物活性 Testing in process

内毒素检测 <1 EU per 1 µg of the protein by the LAL method.

蛋白序列 A DNA sequence encoding Human CD28 ECD (# P10747) (Asn19 – Pro152) was expressed with polyhistidine-SUMO tag at the N-terminus.

产品形式 The protein was lyophilized from a 0.2 µm filtered solution containing 1X PBS, pH 7.4. If you have any concerns or special requirements, please confirm with us.

产品应用 Cell Culture

产品使用

1. Before opening, centrifuge at 3000 rpm for 5 mins.

2.Initial Reconstitution

- Reconstitute the Lyophilized Protein in sterile H₂O to a concentration of 100-200 µg/mL.
- Then, incubate it at room temperature for at least 20 mins to ensure sufficient dissolution.
Do Not Vortex! Vigorous shaking may impair the biological activity of the protein.
- Store at 2°C to 8°C for up to 1 week.

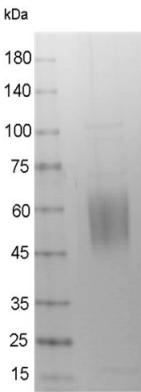
3.Extended Storage

- After the initial reconstitution, further dilute the reconstituted protein in a buffer containing a carrier protein or stabilizer (e.g., 0.1% BSA, 10% FBS, 5% HSA, or 5% trehalose solution). The final concentration is not less than 10 µg/ml.
- Prepare aliquots (≥20 µl).
- Store at -20°C or -80°C for 3 to 6 months.
Avoid repeated freeze-thaw cycles.

产品储存/运输

储存	Lyophilized Protein: Store at -20°C for 1 year.
	Initial Reconstitution: Store at 2°C to 8°C for up to 1 week.
	Extended Storage: Store at -20°C or -80°C for 3 to 6 months with a carrier protein or stabilizer.
运输	Blue Ice

实验数据展示



SDS-PAGE analysis of recombinant human CD28 ECD

For Research Use or Further Manufacturing Only

Chamot Biotechnology(Shanghai) Co., Ltd. www.chamot-bio.com

Tel: 021-51880030 Mail: info@chamot-bio.com QQ: 864920491